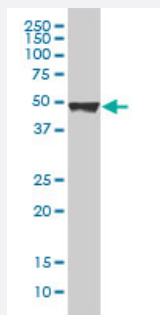


KRT20 monoclonal antibody (M01), clone 2G3-1C8

Catalog # H00054474-M01

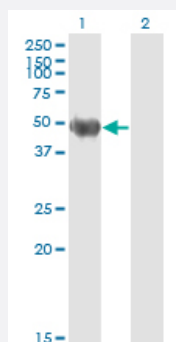
Size 100 ug

Applications



Western Blot (Cell lysate)

KRT20 monoclonal antibody (M01), clone 2G3-1C8 Western Blot analysis of KRT20 expression in A-431 (Cat # L015V1).

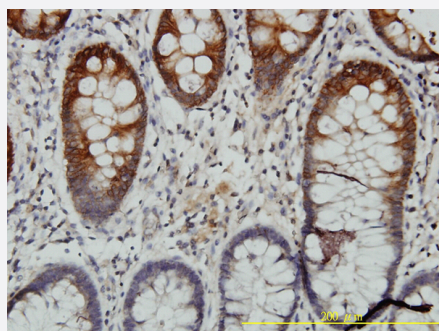


Western Blot (Transfected lysate)

Western Blot analysis of KRT20 expression in transfected 293T cell line by KRT20 monoclonal antibody (M01), clone 2G3-1C8.

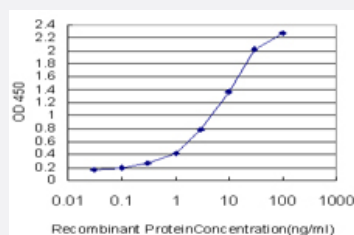
Lane 1: KRT20 transfected lysate(48.5 KDa).

Lane 2: Non-transfected lysate.



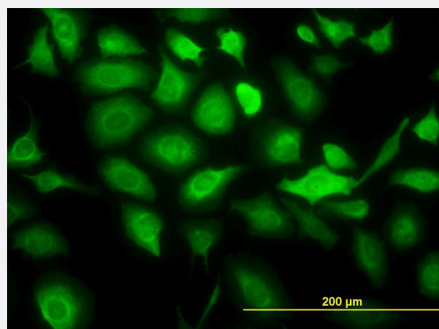
Immunohistochemistry (Formalin/PFA-fixed paraffin-embedded sections)

Immunoperoxidase of monoclonal antibody to KRT20 on formalin-fixed paraffin-embedded human colon tissue. [antibody concentration 3 ug/ml]



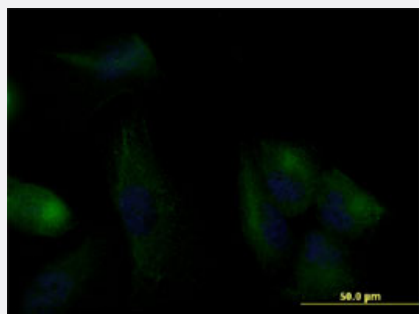
Sandwich ELISA (Recombinant protein)

Detection limit for recombinant GST tagged KRT20 is approximately 0.03ng/ml as a capture antibody.



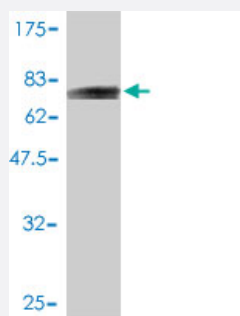
Immunofluorescence

Immunofluorescence of monoclonal antibody to KRT20 on HeLa cell. [antibody concentration 10 ug/ml]



Immunofluorescence

Immunofluorescence of monoclonal antibody to KRT20 on U-2 OS cell. [antibody concentration 10 ug/ml]



Western Blot detection against Immunogen (72.38 KDa) .

Specification

Product Description	Mouse monoclonal antibody raised against a full length recombinant KRT20.
Immunogen	KRT20 (AAH31559, 1 a.a. ~ 424 a.a) full-length recombinant protein with GST tag. MW of the GST tag alone is 26 KDa.
Sequence	<p>MDFSRRSFHRSLSSSLQAPVVSTVGMQRLGTTSPVYGGAGGRGIRISNSRHTVNYGSDLTGGGD</p> <p>LFVGNEKMAMQNLNDRLASYLEKVRTLQSNKLEVQIKQWYETNAPRAGRDYSAYRQIEELRS</p> <p>QIKDAQLQNARCVLQIDNAKLAAEDFRLKYETERGIRLTVEADLQGLNKVFDDTLHKTDLEIQIEEL</p> <p>NKDLALLKKEHQEEVDGLHKHLGNTVNVEVDAAPGLNLGVIMNEMRQKYEVMAQKNLQEAKEQ</p> <p>FERQTAVLQQQVTVNTEELKGTEVQLTELRRTSQSLEIELQSHLSMKESLEHTLEETKARYSSQLA</p> <p>NLQSLSSLEAQLMQIRSNMERQNNEYHILLDIKTRLEQEIATYRRLLEGEDVKTTEYQLSTLEERDI</p> <p>KKTRKIKTVVQEVVDGKVSSEVKEVEENI</p>
Host	Mouse
Reactivity	Human

Interspecies Antigen Sequence	Mouse (78); Rat (80)
Isotype	IgG1 kappa
Quality Control Testing	Antibody Reactive Against Recombinant Protein. Western Blot detection against Immunogen (72.38 KDa) .
Storage Buffer	In 1x PBS, pH 7.4
Storage Instruction	Store at -20°C or lower. Aliquot to avoid repeated freezing and thawing.

Applications

- Western Blot (Cell lysate)

KRT20 monoclonal antibody (M01), clone 2G3-1C8 Western Blot analysis of KRT20 expression in A-431 (Cat # L015V1).

[Protocol Download](#)

- Western Blot (Transfected lysate)

Western Blot analysis of KRT20 expression in transfected 293T cell line by KRT20 monoclonal antibody (M01), clone 2G3-1C8.

Lane 1: KRT20 transfected lysate(48.5 KDa).

Lane 2: Non-transfected lysate.

[Protocol Download](#)

- Western Blot (Recombinant protein)

[Protocol Download](#)

- Immunohistochemistry (Formalin/PFA-fixed paraffin-embedded sections)

Immunoperoxidase of monoclonal antibody to KRT20 on formalin-fixed paraffin-embedded human colon tissue. [antibody concentration 3 ug/ml]

[Protocol Download](#)

- Sandwich ELISA (Recombinant protein)

Detection limit for recombinant GST tagged KRT20 is approximately 0.03ng/ml as a capture antibody.

[Protocol Download](#)

- ELISA

- Immunofluorescence

Immunofluorescence of monoclonal antibody to KRT20 on HeLa cell. [antibody concentration 10 ug/ml]

- Immunofluorescence

Immunofluorescence of monoclonal antibody to KRT20 on U-2 OS cell. [antibody concentration 10 ug/ml]

Gene Info — KRT20

Entrez GeneID [54474](#)

GeneBank Accession# [BC031559](#)

Protein Accession# [AAH31559](#)

Gene Name KRT20

Gene Alias CD20, CK20, K20, KRT21, MGC35423

Gene Description keratin 20

Omim ID [608218](#)

Gene Ontology [Hyperlink](#)

Gene Summary The protein encoded by this gene is a member of the keratin family. The keratins are intermediate filament proteins responsible for the structural integrity of epithelial cells and are subdivided into cytokeratins and hair keratins. The type I cytokeratins consist of acidic proteins which are arranged in pairs of heterotypic keratin chains. This cytokeratin is a major cellular protein of mature enterocytes and goblet cells and is specifically expressed in the gastric and intestinal mucosa. The type I cytokeratin genes are clustered in a region of chromosome 17q12-q21. [provided by RefSeq]

Other Designations cytokeratin 20|keratin, type I cytoskeletal 20

Disease

- [Genetic Predisposition to Disease](#)
- [Growth Disorders](#)