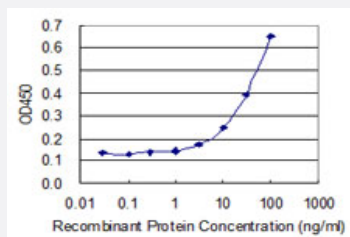


# MRPS21 monoclonal antibody (M03), clone 1C5

Catalog # H00054460-M03

Size 100 ug

## Applications



### Sandwich ELISA (Recombinant protein)

Detection limit for recombinant GST tagged MRPS21 is 1 ng/ml as a capture antibody.

## Specification

<b>Product Description</b>	Mouse monoclonal antibody raised against a full-length recombinant MRPS21.
<b>Immunogen</b>	MRPS21 (AAH04566, 1 a.a. ~ 87 a.a) full-length recombinant protein with GST tag. MW of the GST tag alone is 26 KDa.
<b>Sequence</b>	MAKHLKFIARTVMVQEGNVESAYRTLNRILTMDGLIEDIKHRRYYEKPCRRRQRESYERCRRYNME MARKINFLMRKNRADPWQGC
<b>Host</b>	Mouse
<b>Reactivity</b>	Human
<b>Interspecies Antigen Sequence</b>	Mouse (90); Rat (91)
<b>Isotype</b>	IgG2b Kappa
<b>Quality Control Testing</b>	Antibody Reactive Against Recombinant Protein.
<b>Storage Buffer</b>	In 1x PBS, pH 7.4
<b>Storage Instruction</b>	Store at -20°C or lower. Aliquot to avoid repeated freezing and thawing.

## Applications

- Sandwich ELISA (Recombinant protein)

Detection limit for recombinant GST tagged MRPS21 is 1 ng/ml as a capture antibody.

[Protocol Download](#)

- ELISA

## Gene Info — MRPS21

Entrez GeneID [54460](#)

GeneBank Accession# [BC004566](#)

Protein Accession# [AAH04566](#)

Gene Name MRPS21

Gene Alias MDS016, MRP-S21, RPMS21

Gene Description mitochondrial ribosomal protein S21

Gene Ontology [Hyperlink](#)

**Gene Summary**

Mammalian mitochondrial ribosomal proteins are encoded by nuclear genes and help in protein synthesis within the mitochondrion. Mitochondrial ribosomes (mitoribosomes) consist of a small 28S subunit and a large 39S subunit. They have an estimated 75% protein to rRNA composition compared to prokaryotic ribosomes, where this ratio is reversed. Another difference between mammalian mitoribosomes and prokaryotic ribosomes is that the latter contain a 5S rRNA. Among different species, the proteins comprising the mitoribosome differ greatly in sequence, and sometimes in biochemical properties, which prevents easy recognition by sequence homology. This gene encodes a 28S subunit protein that belongs to the ribosomal protein S21P family. Pseudogenes corresponding to this gene are found on chromosomes 1p, 1q, 9p, 10p, 10q, 16q, and 17q. Available sequence data analyses identified splice variants that differ in the 5' UTR; both transcripts encode the same protein. [provided by RefSeq]

**Other Designations** OTTHUMP00000014527|OTTHUMP00000014921|mitochondrial 28S ribosomal protein S21