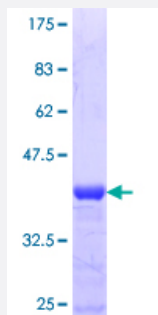


TAF7L (Human) Recombinant Protein (Q01)

Catalog # H00054457-Q01

Size 25 ug, 10 ug

Applications



Specification

Product Description	Human TAF7L partial ORF (NP_079161.2, 231 a.a. - 332 a.a.) recombinant protein with GST-tag at N-terminal.
Sequence	KKRFRKTQKKVPDVKEMEKSSFTEYIESPDVENEVKRLLRSDAEAVSTRWEVIAEDGTKEIESQG SIPGFLISSGMSSHKQGHTSSEYDMLREMFSDSRNN
Host	Wheat Germ (in vitro)
Theoretical MW (kDa)	36.96
Interspecies Antigen Sequence	Mouse (50); Rat (49)
Preparation Method	in vitro wheat germ expression system
Purification	Glutathione Sepharose 4 Fast Flow
Quality Control Testing	12.5% SDS-PAGE Stained with Coomassie Blue.
Storage Buffer	50 mM Tris-HCl, 10 mM reduced Glutathione, pH=8.0 in the elution buffer.
Storage Instruction	Store at -80°C. Aliquot to avoid repeated freezing and thawing.
Note	Best use within three months from the date of receipt of this protein.

Applications

- Enzyme-linked Immunoabsorbent Assay
- Western Blot (Recombinant protein)
- Antibody Production
- Protein Array

Gene Info — TAF7L

Entrez GeneID	54457
GeneBank Accession#	NM_024885
Protein Accession#	NP_079161.2
Gene Name	TAF7L
Gene Alias	FLJ23157, TAF2Q, dJ738A13.1
Gene Description	TAF7-like RNA polymerase II, TATA box binding protein (TBP)-associated factor, 50kDa
Omim ID	300314
Gene Ontology	Hyperlink
Gene Summary	This gene is similar to a mouse gene that encodes a TATA box binding protein-associated factor, and shows testis-specific expression. [provided by RefSeq]
Other Designations	OTTHUMP00000023675 TAF7-like RNA polymerase II, TATA box binding protein (TBP)-associated factor, 50 kD TATA box binding protein (TBP)-associated factor, RNA polymerase II, Q TATA box binding protein-associated factor, RNA polymerase II, Q TBP-associated

Pathway

- [Basal transcription factors](#)