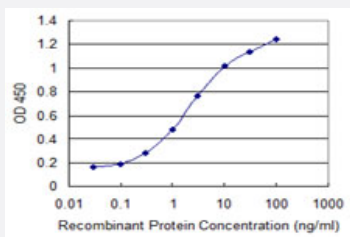


# TAF7L monoclonal antibody (M04), clone 3E10

Catalog # H00054457-M04

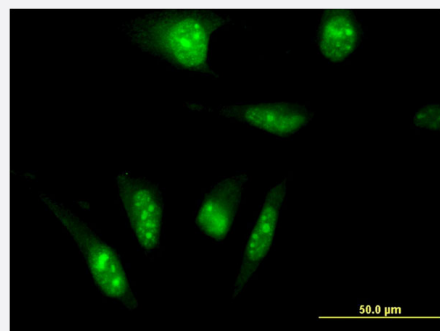
Size 100 ug

## Applications



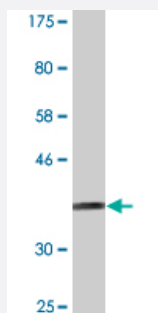
### Sandwich ELISA (Recombinant protein)

Detection limit for recombinant GST tagged TAF7L is 0.03 ng/ml as a capture antibody.



### Immunofluorescence

Immunofluorescence of monoclonal antibody to TAF7L on HeLa cell . [antibody concentration 10 ug/ml]



Western Blot detection against Immunogen (36.96 KDa) .

## Specification

### Product Description

Mouse monoclonal antibody raised against a partial recombinant TAF7L.

Immunogen	TAF7L (NP_079161.2, 231 a.a. ~ 332 a.a) partial recombinant protein with GST tag. MW of the GST tag alone is 26 KDa.
Sequence	KKRFRKTQKKVPDVKEMEKSSFTEYIESPDVENEVKRLLRSDAEAVSTRWEVIAEDGTKEIESQG SIPGFLISSGMSSHKQGHTSSEYDMLREMFSDSRNN
Host	Mouse
Reactivity	Human
Interspecies Antigen Sequence	Mouse (50); Rat (49)
Isotype	IgG2b Kappa
Quality Control Testing	Antibody Reactive Against Recombinant Protein. Western Blot detection against Immunogen (36.96 KDa) .
Storage Buffer	In 1x PBS, pH 7.4
Storage Instruction	Store at -20°C or lower. Aliquot to avoid repeated freezing and thawing.

## Applications

- Western Blot (Recombinant protein)

[Protocol Download](#)

- Sandwich ELISA (Recombinant protein)

Detection limit for recombinant GST tagged TAF7L is 0.03 ng/ml as a capture antibody.

[Protocol Download](#)

- ELISA

- Immunofluorescence

Immunofluorescence of monoclonal antibody to TAF7L on HeLa cell . [antibody concentration 10 ug/ml]

## Gene Info — TAF7L

Entrez GeneID [54457](#)

GeneBank Accession# [NM\\_024885](#)

Protein Accession#	<a href="#">NP_079161.2</a>
Gene Name	TAF7L
Gene Alias	FLJ23157, TAF2Q, dJ738A13.1
Gene Description	TAF7-like RNA polymerase II, TATA box binding protein (TBP)-associated factor, 50kDa
Omim ID	<a href="#">300314</a>
Gene Ontology	<a href="#">Hyperlink</a>
Gene Summary	This gene is similar to a mouse gene that encodes a TATA box binding protein-associated factor, and shows testis-specific expression. [provided by RefSeq]
Other Designations	OTTHUMP00000023675 TAF7-like RNA polymerase II, TATA box binding protein (TBP)-associated factor, 50 kD TATA box binding protein (TBP)-associated factor, RNA polymerase II, Q TATA box binding protein-associated factor, RNA polymerase II, Q TBP-associated

## Pathway

- [Basal transcription factors](#)