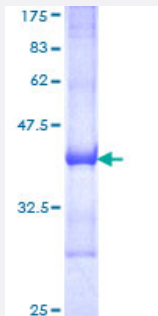


# RIN2 (Human) Recombinant Protein (Q01)

Catalog # H00054453-Q01

Size 25 ug, 10 ug

## Applications



## Specification

<b>Product Description</b>	Human RIN2 partial ORF ( NP_061866, 786 a.a. - 894 a.a.) recombinant protein with GST-tag at N-terminal.
<b>Sequence</b>	DFQNYLRVAFQEVSNGCTGKTLVLRPYTTEDVCQICAEKFKVGDPEEYSLFLFVDETWQQLAED TYPQKIKAEHLSRPQPHIFHFVYKRIKNDPYGIIFQNGEEDLTT
<b>Host</b>	Wheat Germ (in vitro)
<b>Theoretical MW (kDa)</b>	37.73
<b>Interspecies Antigen Sequence</b>	Mouse (95); Rat (94)
<b>Preparation Method</b>	<a href="#">in vitro wheat germ expression system</a>
<b>Purification</b>	Glutathione Sepharose 4 Fast Flow
<b>Quality Control Testing</b>	12.5% SDS-PAGE Stained with Coomassie Blue.
<b>Storage Buffer</b>	50 mM Tris-HCl, 10 mM reduced Glutathione, pH=8.0 in the elution buffer.
<b>Storage Instruction</b>	Store at -80°C. Aliquot to avoid repeated freezing and thawing.
<b>Note</b>	Best use within three months from the date of receipt of this protein.

## Applications

- Enzyme-linked Immunoabsorbent Assay
- Western Blot (Recombinant protein)
- Antibody Production
- Protein Array

## Gene Info — RIN2

Entrez GeneID [54453](#)

GeneBank Accession# [NM\\_018993](#)

Protein Accession# [NP\\_061866](#)

Gene Name RIN2

Gene Alias RASSF4

Gene Description Ras and Rab interactor 2

Omim ID [610222](#)

Gene Ontology [Hyperlink](#)

**Gene Summary** The RAB5 protein is a small GTPase involved in membrane trafficking in the early endocytic pathway. The protein encoded by this gene binds the GTP-bound form of the RAB5 protein preferentially over the GDP-bound form, and functions as a guanine nucleotide exchange factor for RAB5. The encoded protein is found primarily as a tetramer in the cytoplasm and does not bind other members of the RAB family. [provided by RefSeq]

**Other Designations** RAB5 interacting protein 2|RAS association (RalGDS/AF-6) domain containing protein JC265|RAS association domain family 4|RAS inhibitor JC265|RAS interaction/interference protein 2