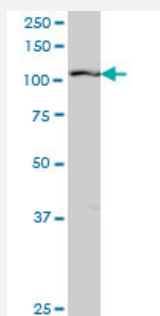


# RIN2 monoclonal antibody (M04), clone 1E6

Catalog # H00054453-M04

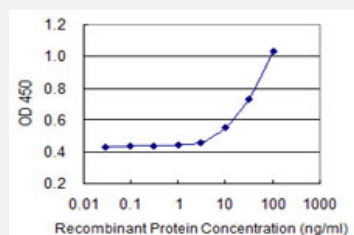
Size 100 ug

## Applications



### Western Blot (Cell lysate)

RIN2 monoclonal antibody (M04), clone 1E6. Western Blot analysis of RIN2 expression in Y-79 ( Cat # L042V1 ).



### Sandwich ELISA (Recombinant protein)

Detection limit for recombinant GST tagged RIN2 is 3 ng/ml as a capture antibody.



Western Blot detection against Immunogen (37.73 KDa) .

## Specification

### Product Description

Mouse monoclonal antibody raised against a partial recombinant RIN2.

<b>Immunogen</b>	RIN2 (NP_061866, 786 a.a. ~ 894 a.a) partial recombinant protein with GST tag. MW of the GST tag alone is 26 KDa.
<b>Sequence</b>	DFQNYLRVAFQEVSNGCTGKTLVLRPYTTEDVCQICAEKFKVGDPEEYSLFLFVDETWQQLAED TYPQKIKAEH SRPQHIFHFVYKRIKNDPYGIIFQNGEEDLTT
<b>Host</b>	Mouse
<b>Reactivity</b>	Human
<b>Interspecies Antigen Sequence</b>	Mouse (95); Rat (94)
<b>Isotype</b>	IgG2a Kappa
<b>Quality Control Testing</b>	Antibody Reactive Against Recombinant Protein. Western Blot detection against Immunogen (37.73 KDa) .
<b>Storage Buffer</b>	In 1x PBS, pH 7.4
<b>Storage Instruction</b>	Store at -20°C or lower. Aliquot to avoid repeated freezing and thawing.

## Applications

- Western Blot (Cell lysate)

RIN2 monoclonal antibody (M04), clone 1E6. Western Blot analysis of RIN2 expression in Y-79 ( Cat # L042V1 ).

[Protocol Download](#)

- Western Blot (Recombinant protein)

[Protocol Download](#)

- Sandwich ELISA (Recombinant protein)

Detection limit for recombinant GST tagged RIN2 is 3 ng/ml as a capture antibody.

[Protocol Download](#)

- ELISA

## Gene Info — RIN2

Entrez GeneID [54453](#)

GeneBank Accession#	<a href="#">NM_018993</a>
Protein Accession#	<a href="#">NP_061866</a>
Gene Name	RIN2
Gene Alias	RASSF4
Gene Description	Ras and Rab interactor 2
Omim ID	<a href="#">610222</a>
Gene Ontology	<a href="#">Hyperlink</a>
Gene Summary	<p>The RAB5 protein is a small GTPase involved in membrane trafficking in the early endocytic pathway. The protein encoded by this gene binds the GTP-bound form of the RAB5 protein preferentially over the GDP-bound form, and functions as a guanine nucleotide exchange factor for RAB5. The encoded protein is found primarily as a tetramer in the cytoplasm and does not bind other members of the RAB family. [provided by RefSeq]</p>
Other Designations	RAB5 interacting protein 2 RAS association (RalGDS/AF-6) domain containing protein JC265 RAS association domain family 4 RAS inhibitor JC265 RAS interaction/interference protein 2