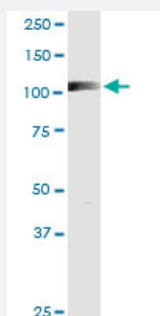


RIN2 monoclonal antibody (M01), clone 1E7

Catalog # H00054453-M01

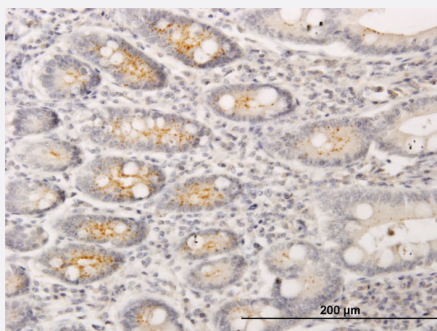
Size 100 ug

Applications



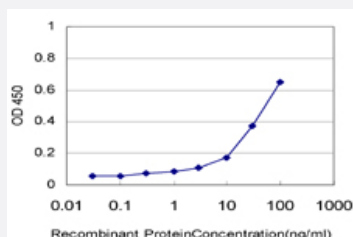
Western Blot (Tissue lysate)

RIN2 monoclonal antibody (M01), clone 1E7. Western Blot analysis of RIN2 expression in human liver.



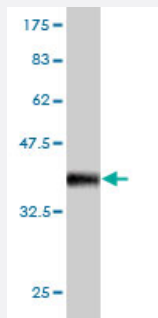
Immunohistochemistry (Formalin/PFA-fixed paraffin-embedded sections)

Immunoperoxidase of monoclonal antibody to RIN2 on formalin-fixed paraffin-embedded human small Intestine. [antibody concentration 1.5 ug/ml]



Sandwich ELISA (Recombinant protein)

Detection limit for recombinant GST tagged RIN2 is approximately 1ng/ml as a capture antibody.



Western Blot detection against Immunogen (37.73 KDa) .

Specification

Product Description	Mouse monoclonal antibody raised against a partial recombinant RIN2.
Immunogen	RIN2 (NP_061866, 786 a.a. ~ 894 a.a) partial recombinant protein with GST tag. MW of the GST tag alone is 26 KDa.
Sequence	DFQNYLRVAFQEVNSGCTGKTLVLRPYTTEDVCQICAEKFKVGDPEEYSLFLFVDETWQQLAED TYPQKIKAEHLSRPQPHIFHFVYKRIKNDPYGIIFQNGEEDLTT
Host	Mouse
Reactivity	Human
Interspecies Antigen Sequence	Mouse (95); Rat (94)
Isotype	IgG1 Kappa
Quality Control Testing	Antibody Reactive Against Recombinant Protein. Western Blot detection against Immunogen (37.73 KDa) .
Storage Buffer	In 1x PBS, pH 7.4
Storage Instruction	Store at -20°C or lower. Aliquot to avoid repeated freezing and thawing.

Applications

- Western Blot (Tissue lysate)

RIN2 monoclonal antibody (M01), clone 1E7. Western Blot analysis of RIN2 expression in human liver.

[Protocol Download](#)

- Western Blot (Recombinant protein)

[Protocol Download](#)

- Immunohistochemistry (Formalin/PFA-fixed paraffin-embedded sections)

Immunoperoxidase of monoclonal antibody to RIN2 on formalin-fixed paraffin-embedded human small Intestine. [antibody concentration 1.5 ug/ml]

[Protocol Download](#)

- Sandwich ELISA (Recombinant protein)

Detection limit for recombinant GST tagged RIN2 is approximately 1ng/ml as a capture antibody.

[Protocol Download](#)

- ELISA

Gene Info — RIN2

Entrez GeneID [54453](#)

GeneBank Accession# [NM_018993](#)

Protein Accession# [NP_061866](#)

Gene Name RIN2

Gene Alias RASSF4

Gene Description Ras and Rab interactor 2

Omim ID [610222](#)

Gene Ontology [Hyperlink](#)

Gene Summary The RAB5 protein is a small GTPase involved in membrane trafficking in the early endocytic pathway. The protein encoded by this gene binds the GTP-bound form of the RAB5 protein preferentially over the GDP-bound form, and functions as a guanine nucleotide exchange factor for RAB5. The encoded protein is found primarily as a tetramer in the cytoplasm and does not bind other members of the RAB family. [provided by RefSeq]

Other Designations RAB5 interacting protein 2|RAS association (RalGDS/AF-6) domain containing protein JC265|RAS association domain family 4|RAS inhibitor JC265|RAS interaction/interference protein 2