

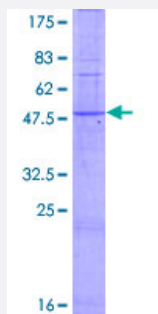
Full-Length

# TAS2R5 (Human) Recombinant Protein (P01)

Catalog # H00054429-P01

Size 25 ug, 10 ug

## Applications



## Specification

### Product Description

Human TAS2R5 full-length ORF ( AAH95522.1, 1 a.a. - 299 a.a.) recombinant protein with GST-tag at N-terminal.

### Sequence

MLSAGLGLLMLVAVVEFLIGLIGNGSLVVWSFREWIRKFNWSSYNLILGLAGCRFLQWLILDLSLF  
PLFQSSRWLRYSIFWVLVSQASLWFATFLSVFYCKKITTFDRPAYLWLKQRAYNLSLWCLLGYPFI  
NLLLTVQIGLTFYHPPQGNSSIRYPFESWQYLAFQLNSGSYLPLVVFLVSSGMLVSLYTHHKMK  
VHSAGRDRDVRKAHITALKSLGCFLLHLVYIMASPFISITKTYPPDLTSVFIWETLMAAYPSLHSLIL  
IMGIPRVKQTCQKILWKAVCARRCWGP

### Host

Wheat Germ (in vitro)

### Theoretical MW (kDa)

60.9

### Preparation Method

[in vitro wheat germ expression system](#)

### Purification

Glutathione Sepharose 4 Fast Flow

### Quality Control Testing

12.5% SDS-PAGE Stained with Coomassie Blue.

### Storage Buffer

50 mM Tris-HCl, 10 mM reduced Glutathione, pH=8.0 in the elution buffer.

### Storage Instruction

Store at -80°C. Aliquot to avoid repeated freezing and thawing.

### Note

Best use within three months from the date of receipt of this protein.

## Applications

- Enzyme-linked Immunoabsorbent Assay
- Western Blot (Recombinant protein)
- Antibody Production
- Protein Array

## Gene Info — TAS2R5

Entrez GeneID [54429](#)

GeneBank Accession# [BC095522.1](#)

Protein Accession# [AAH95522.1](#)

Gene Name TAS2R5

Gene Alias MGC126635, MGC126637, T2R5

Gene Description taste receptor, type 2, member 5

Omim ID [605062](#)

Gene Ontology [Hyperlink](#)

**Gene Summary** This gene encodes a bitter taste receptor; bitter taste receptors are members of the G protein-coupled receptor superfamily and are specifically expressed by taste receptor cells of the tongue and palate epithelia. Each of these apparently intronless taste receptor genes encodes a 7-transmembrane receptor protein, functioning as a bitter taste receptor. This gene is clustered with another 3 candidate taste receptor genes on chromosome 7 and is genetically linked to loci that influence bitter perception. [provided by RefSeq]

**Other Designations** taste receptor T2R5

## Pathway

- [Taste transduction](#)