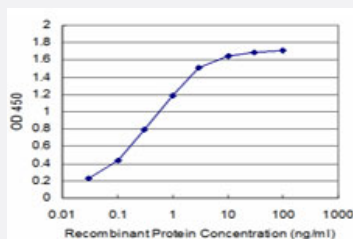


KCNK10 monoclonal antibody (M03), clone 1C1

Catalog # H00054207-M03

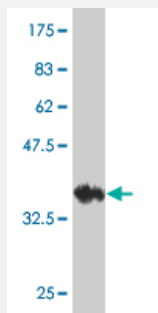
Size 100 ug

Applications



Sandwich ELISA (Recombinant protein)

Detection limit for recombinant GST tagged KCNK10 is approximately 0.1ng/ml as a capture antibody.



Western Blot detection against Immunogen (36.74 KDa) .

Specification

Product Description	Mouse monoclonal antibody raised against a partial recombinant KCNK10.
Immunogen	KCNK10 (NP_066984, 439 a.a. ~ 538 a.a) partial recombinant protein with GST tag. MW of the GST tag alone is 26 KDa.
Sequence	SEDNIINKFGSTSRSLTKRKNKDLKKTLPEDVQKIYKTRFNYSLDEEKKEEETKMCNSDNSSTAML TDCIQQHAELENGMIPTDTKDREPENNSLLEDNRN
Host	Mouse
Reactivity	Human
Isotype	IgG1 Kappa

Quality Control Testing

Antibody Reactive Against Recombinant Protein.
Western Blot detection against Immunogen (36.74 KDa) .

Storage Buffer

In 1x PBS, pH 7.4

Storage Instruction

Store at -20°C or lower. Aliquot to avoid repeated freezing and thawing.

Applications

- Western Blot (Recombinant protein)

[Protocol Download](#)

- Sandwich ELISA (Recombinant protein)

Detection limit for recombinant GST tagged KCNK10 is approximately 0.1ng/ml as a capture antibody.

[Protocol Download](#)

- ELISA

Gene Info — KCNK10

Entrez GeneID

[54207](#)

GeneBank Accession#

[NM_021161](#)

Protein Accession#

[NP_066984](#)

Gene Name

KCNK10

Gene Alias

FLJ43399, K2p10.1, TREK-2, TREK2

Gene Description

potassium channel, subfamily K, member 10

Omim ID

[605873](#)

Gene Ontology

[Hyperlink](#)

Gene Summary

The protein encoded by this gene belongs to the family of potassium channel proteins containing two pore-forming P domains. This channel is an open rectifier which primarily passes outward current under physiological K⁺ concentrations, and is stimulated strongly by arachidonic acid and to a lesser degree by membrane stretching, intracellular acidification, and general anaesthetics. Several alternatively spliced transcript variants encoding different isoforms have been identified for this gene. [provided by RefSeq]

Other Designations

2P domain potassium channel TREK2|TWIK-related K⁺ channel 2|outward rectifying potassium c
hannel protein TREK-2|potassium channel TREK-2
