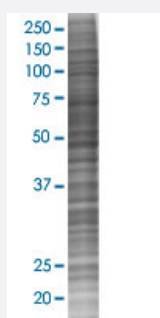


CYCS 293T Cell Transient Overexpression Lysate(Denatured)

Catalog # H00054205-T02

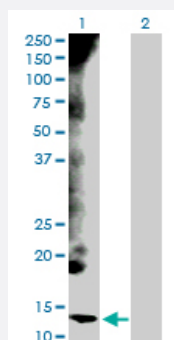
Size 100 uL

Applications



SDS-PAGE Gel

CYCS transfected lysate.



Western Blot

Lane 1: CYCS transfected lysate (11.70 KDa)

Lane 2: Non-transfected lysate.

Specification

Transfected Cell Line 293T

Plasmid pCMV-CYCS full-length

Host Human

Theoretical MW (kDa) 11.7

Quality Control Testing Transient overexpression cell lysate was tested with Anti-CYCS antibody ([H00054205-D01P](#)) by Western Blots.
 SDS-PAGE Gel
 CYCS transfected lysate.
 Western Blot
 Lane 1: CYCS transfected lysate (11.70 KDa)
 Lane 2: Non-transfected lysate.

Storage Buffer

1X Sample Buffer (50 mM Tris-HCl, 2% SDS, 10% glycerol, 300 mM 2-mercaptoethanol, 0.01% Bromophenol blue)

Storage Instruction

Store at -80°C. Aliquot to avoid repeated freezing and thawing.

Applications

- Western Blot

Gene Info — CYCS

Entrez GeneID[54205](#)**GeneBank Accession#**[NM_018947](#)**Protein Accession#**[NP_061820.1](#)**Gene Name**

CYCS

Gene Alias

CYC, HCS

Gene Description

cytochrome c, somatic

Omim ID[123970](#)**Gene Ontology**[Hyperlink](#)**Gene Summary**

This gene encodes cytochrome c, a component of the electron transport chain in mitochondria. The heme group of cytochrome c accepts electrons from the b-c1 complex and transfers electrons to the cytochrome oxidase complex. Cytochrome c is also involved in initiation of apoptosis. Upon release of cytochrome c to the cytoplasm, the protein binds apoptotic protease activating factor which activates the apoptotic initiator procaspase 9. Many cytochrome c pseudogenes exist, scattered throughout the human genome. [provided by RefSeq]

Other Designations

cytochrome c

Pathway

- [Amyotrophic lateral sclerosis \(ALS\)](#)
- [Apoptosis](#)
- [Colorectal cancer](#)

- [p53 signaling pathway](#)
- [Pathways in cancer](#)
- [Small cell lung cancer](#)

Disease

- [Thrombocytopenia](#)