

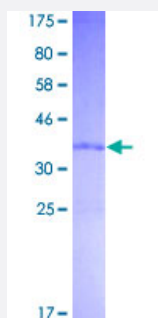
Full-Length

CYCS (Human) Recombinant Protein (P01)

Catalog # H00054205-P01

Size 25 ug, 10 ug

Applications



Specification

Product Description	Human CYCS full-length ORF (AAH05299, 1 a.a. - 105 a.a.) recombinant protein with GST-tag at N-terminal.
Sequence	MGDVEKGKKIFIMKCSQCHTVEKGGKHKTGPNLHGLFGRKTGQAPGYSYTAANKNKGIIWGEDTL MEYLENPKKYIPGTKMIFVGIIKKKEERADLIAYLKATNE
Host	Wheat Germ (in vitro)
Theoretical MW (kDa)	37.29
Preparation Method	in vitro wheat germ expression system
Purification	Glutathione Sepharose 4 Fast Flow
Quality Control Testing	12.5% SDS-PAGE Stained with Coomassie Blue.
Storage Buffer	50 mM Tris-HCl, 10 mM reduced Glutathione, pH=8.0 in the elution buffer.
Storage Instruction	Store at -80°C. Aliquot to avoid repeated freezing and thawing.
Note	Best use within three months from the date of receipt of this protein.

Applications

- Enzyme-linked Immunoabsorbent Assay
- Western Blot (Recombinant protein)
- Antibody Production
- Protein Array

Gene Info — CYCS

Entrez GeneID	54205
GeneBank Accession#	BC005299
Protein Accession#	AAH05299
Gene Name	CYCS
Gene Alias	CYC, HCS
Gene Description	cytochrome c, somatic
Omim ID	123970
Gene Ontology	Hyperlink
Gene Summary	This gene encodes cytochrome c, a component of the electron transport chain in mitochondria. The heme group of cytochrome c accepts electrons from the b-c1 complex and transfers electrons to the cytochrome oxidase complex. Cytochrome c is also involved in initiation of apoptosis. Upon release of cytochrome c to the cytoplasm, the protein binds apoptotic protease activating factor which activates the apoptotic initiator procaspase 9. Many cytochrome c pseudogenes exist, scattered throughout the human genome. [provided by RefSeq]
Other Designations	cytochrome c

Pathway

- [Amyotrophic lateral sclerosis \(ALS\)](#)
- [Apoptosis](#)

- [Colorectal cancer](#)
- [p53 signaling pathway](#)
- [Pathways in cancer](#)
- [Small cell lung cancer](#)

Disease

- [Thrombocytopenia](#)