

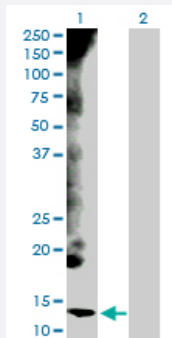
MaxPab®

# CYCS purified MaxPab rabbit polyclonal antibody (D01P)

Catalog # H00054205-D01P

Size 100 ug

## Applications

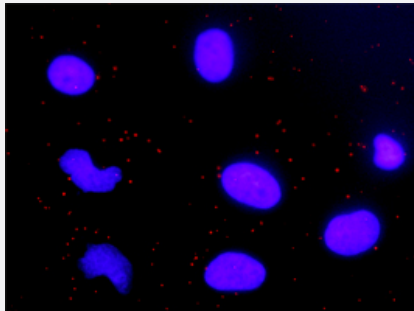


### Western Blot (Transfected lysate)

Western Blot analysis of CYCS expression in transfected 293T cell line ([H00054205-T02](#)) by CYCS MaxPab polyclonal antibody.

Lane 1: CYCS transfected lysate(11.70 kDa).

Lane 2: Non-transfected lysate.



### In situ Proximity Ligation Assay (Cell)

Proximity Ligation Analysis of protein-protein interactions between CYCS and CASP9. HeLa cells were stained with anti-CYCS rabbit purified polyclonal 1:1200 and anti-CASP9 mouse monoclonal antibody 1:50. Each red dot represents the detection of protein-protein interaction complex, and nuclei were counterstained with DAPI (blue).

## Specification

Product Description	Rabbit polyclonal antibody raised against a full-length human CYCS protein.
Immunogen	CYCS (NP_061820.1, 1 a.a. ~ 105 a.a) full-length human protein.
Sequence	MGDVEKGKKIFIMKCSQCHTVEKGGKHKTGPNLHGLFGRKTGQAPGYSYTAANKNKGIIWGEDTL MEYLENPKKYIPGTKMIFVGIKKKEERADLIAYLK KATNE
Host	Rabbit
Reactivity	Human
Quality Control Testing	Antibody reactive against mammalian transfected lysate.

## Storage Buffer

In 1x PBS, pH 7.4

## Storage Instruction

Store at -20°C or lower. Aliquot to avoid repeated freezing and thawing.

## Applications

- Western Blot (Transfected lysate)

Western Blot analysis of CYCS expression in transfected 293T cell line ([H00054205-T02](#)) by CYCS MaxPab polyclonal antibody.

Lane 1: CYCS transfected lysate(11.70 KDa).

Lane 2: Non-transfected lysate.

[Protocol Download](#)

- In situ* Proximity Ligation Assay (Cell)

Proximity Ligation Analysis of protein-protein interactions between CYCS and CASP9. HeLa cells were stained with anti-CYCS rabbit purified polyclonal 1:1200 and anti-CASP9 mouse monoclonal antibody 1:50. Each red dot represents the detection of protein-protein interaction complex, and nuclei were counterstained with DAPI (blue).

## Gene Info — CYCS

## Entrez GeneID

[54205](#)

## GeneBank Accession#

[NM\\_018947](#)

## Protein Accession#

[NP\\_061820.1](#)

## Gene Name

CYCS

## Gene Alias

CYC, HCS

## Gene Description

cytochrome c, somatic

## Omim ID

[123970](#)

## Gene Ontology

[Hyperlink](#)

## Gene Summary

This gene encodes cytochrome c, a component of the electron transport chain in mitochondria. The heme group of cytochrome c accepts electrons from the b-c1 complex and transfers electrons to the cytochrome oxidase complex. Cytochrome c is also involved in initiation of apoptosis. Upon release of cytochrome c to the cytoplasm, the protein binds apoptotic protease activating factor which activates the apoptotic initiator procaspase 9. Many cytochrome c pseudogenes exist, scattered throughout the human genome. [provided by RefSeq]

## Other Designations

cytochrome c

## Pathway

- [Amyotrophic lateral sclerosis \(ALS\)](#)
- [Apoptosis](#)
- [Colorectal cancer](#)
- [p53 signaling pathway](#)
- [Pathways in cancer](#)
- [Small cell lung cancer](#)

## Disease

- [Thrombocytopenia](#)