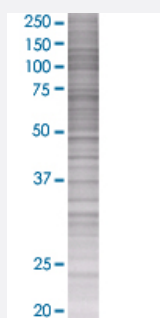


# CHRAC1 293T Cell Transient Overexpression Lysate(Denatured)

Catalog # H00054108-T01

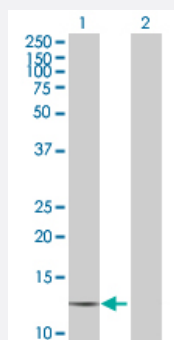
Size 100 uL

## Applications



### SDS-PAGE Gel

CHRAC1 transfected lysate.



### Western Blot

Lane 1: CHRAC1 transfected lysate ( 14.7 KDa)

Lane 2: Non-transfected lysate.

## Specification

Transfected Cell Line	293T
Plasmid	pCMV-CHRAC1 full-length
Host	Human
Theoretical MW (kDa)	14.52
Interspecies Antigen Sequence	Mouse (82); Rat (82)

**Quality Control Testing**

Transient overexpression cell lysate was tested with Anti-CHRAC1 antibody ([H00054108-B01](#)) by Western Blots.  
SDS-PAGE Gel  
CHRAC1 transfected lysate.  
Western Blot  
Lane 1: CHRAC1 transfected lysate ( 14.7 KDa)  
Lane 2: Non-transfected lysate.

**Storage Buffer**

1X Sample Buffer (50 mM Tris-HCl, 2% SDS, 10% glycerol, 300 mM 2-mercaptoethanol, 0.01% Bromophenol blue)

**Storage Instruction**

Store at -80°C. Aliquot to avoid repeated freezing and thawing.

## Applications

- Western Blot

## Gene Info — CHRAC1

Entrez GeneID [54108](#)

GeneBank Accession# [NM\\_017444.3](#)

Protein Accession# [-](#)

Gene Name CHRAC1

Gene Alias CHARC1, CHARC15, CHRAC15, YCL1

Gene Description chromatin accessibility complex 1

Omim ID [607268](#)

Gene Ontology [Hyperlink](#)

**Gene Summary** CHRAC1 is a histone-fold protein that interacts with other histone-fold proteins to bind DNA in a sequence-independent manner. These histone-fold protein dimers combine within larger enzymatic complexes for DNA transcription, replication, and packaging.[supplied by OMIM]

**Other Designations** histone-fold protein CHRAC15