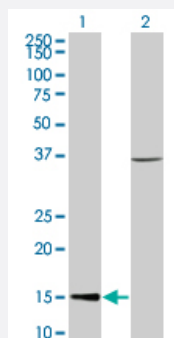


CHRAC1 monoclonal antibody (M05), clone 4B8

Catalog # H00054108-M05

Size 100 ug

Applications

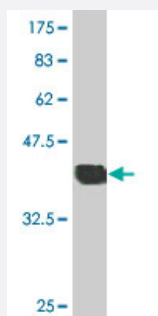


Western Blot (Transfected lysate)

Western Blot analysis of CHRAC1 expression in transfected 293T cell line by CHRAC1 monoclonal antibody (M05), clone 4B8.

Lane 1: CHRAC1 transfected lysate (14.7 KDa).

Lane 2: Non-transfected lysate.



Western Blot detection against Immunogen (40.15 KDa).

Specification

Product Description	Mouse monoclonal antibody raised against a full length recombinant CHRAC1.
Immunogen	CHRAC1 (AAH15891, 1 a.a. ~ 131 a.a) full-length recombinant protein with GST tag. MW of the GST tag alone is 26 KDa.
Sequence	MADVVGKDKGGEQRLISLPLSRIRVIMKSSPEVSSINQEALVLTAKATELFVQCLATYSYRHGSG KEKKVLTYSDLANTAQQSETFQFLADILPKKILASKYKMLKEEKREEDDEENDNDNESDHDEADS
Host	Mouse
Reactivity	Human

Interspecies Antigen Sequence	Mouse (82); Rat (82)
Isotype	IgG2a Kappa
Quality Control Testing	Antibody Reactive Against Recombinant Protein. Western Blot detection against Immunogen (40.15 KDa) .
Storage Buffer	In 1x PBS, pH 7.4
Storage Instruction	Store at -20°C or lower. Aliquot to avoid repeated freezing and thawing.

Applications

- Western Blot (Transfected lysate)

Western Blot analysis of CHRAC1 expression in transfected 293T cell line by CHRAC1 monoclonal antibody (M05), clone 4B8.

Lane 1: CHRAC1 transfected lysate(14.7 KDa).

Lane 2: Non-transfected lysate.

[Protocol Download](#)

- Western Blot (Recombinant protein)

[Protocol Download](#)

- ELISA

Gene Info — CHRAC1

Entrez GeneID	54108
GeneBank Accession#	BC015891
Protein Accession#	AAH15891
Gene Name	CHRAC1
Gene Alias	CHARC1, CHARC15, CHRAC15, YCL1
Gene Description	chromatin accessibility complex 1
Omim ID	607268
Gene Ontology	Hyperlink

Gene Summary

CHRA1 is a histone-fold protein that interacts with other histone-fold proteins to bind DNA in a sequence-independent manner. These histone-fold protein dimers combine within larger enzymatic complexes for DNA transcription, replication, and packaging.[supplied by OMIM]

Other Designations

histone-fold protein CHRA15