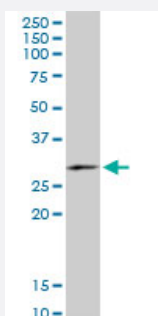


# FAM3B monoclonal antibody (M07), clone 1E7

Catalog # H00054097-M07

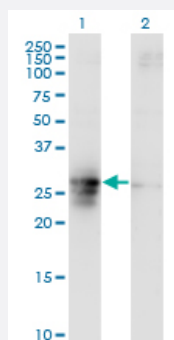
Size 100 ug

## Applications



### Western Blot (Tissue lysate)

FAM3B monoclonal antibody (M07), clone 1E7. Western Blot analysis of FAM3B expression in human kidney.

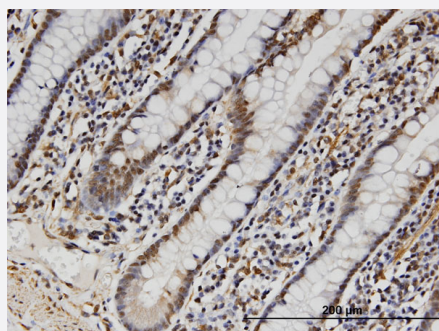


### Western Blot (Transfected lysate)

Western Blot analysis of FAM3B expression in transfected 293T cell line by FAM3B monoclonal antibody (M07), clone 1E7.

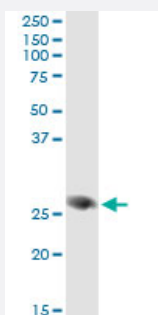
Lane 1: FAM3B transfected lysate(26 KDa).

Lane 2: Non-transfected lysate.



### Immunohistochemistry (Formalin/PFA-fixed paraffin-embedded sections)

Immunoperoxidase of monoclonal antibody to FAM3B on formalin-fixed paraffin-embedded human small Intestine. [antibody concentration 3 ug/ml]

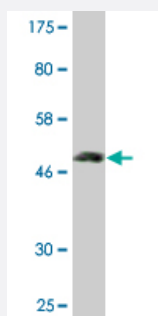
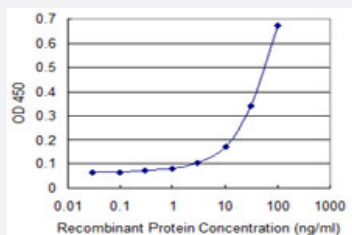


### Immunoprecipitation

Immunoprecipitation of FAM3B transfected lysate using anti-FAM3B monoclonal antibody and Protein A Magnetic Bead, and immunoblotted with FAM3B MaxPab rabbit polyclonal antibody.

## Sandwich ELISA (Recombinant protein)

Detection limit for recombinant GST tagged FAM3B is 1 ng/ml as a capture antibody.



Western Blot detection against Immunogen (51.59 KDa) .

## Specification

<b>Product Description</b>	Mouse monoclonal antibody raised against a full-length recombinant FAM3B.
<b>Immunogen</b>	FAM3B (AAH57829.1, 1 a.a. ~ 235 a.a) full-length recombinant protein with GST tag. MW of the GST tag alone is 26 KDa.
<b>Sequence</b>	MRPLAGLLKVVVFVASFCAWYSGYLLAELIPDAPLSSAAYSIRSIGERPVLKAPVVKRQKCDH WTPCPSDTYAYRLLSGGGRSKYAKICFEDNLLMGEQLGNVARGINIAVNYVTGNVTATRCFDMYE GDNSGPMTKFIQSAAPKSLLFMVTYDDGSTRLNDAKNAIEALGSKEIRNMKFRSSWVFIAAKGLE LPSEIQREKINHSDAKNNRYSGWPAEIQIEGCIPKERS
<b>Host</b>	Mouse
<b>Reactivity</b>	Human
<b>Interspecies Antigen Sequence</b>	Mouse (79); Rat (75)
<b>Isotype</b>	IgG1 Kappa
<b>Quality Control Testing</b>	Antibody Reactive Against Recombinant Protein. Western Blot detection against Immunogen (51.59 KDa) .
<b>Storage Buffer</b>	In 1x PBS, pH 7.4
<b>Storage Instruction</b>	Store at -20°C or lower. Aliquot to avoid repeated freezing and thawing.

## Applications

- Western Blot (Tissue lysate)

FAM3B monoclonal antibody (M07), clone 1E7. Western Blot analysis of FAM3B expression in human kidney.

[Protocol Download](#)

- Western Blot (Transfected lysate)

Western Blot analysis of FAM3B expression in transfected 293T cell line by FAM3B monoclonal antibody (M07), clone 1E7.

Lane 1: FAM3B transfected lysate(26 KDa).

Lane 2: Non-transfected lysate.

[Protocol Download](#)

- Western Blot (Recombinant protein)

[Protocol Download](#)

- Immunohistochemistry (Formalin/PFA-fixed paraffin-embedded sections)

Immunoperoxidase of monoclonal antibody to FAM3B on formalin-fixed paraffin-embedded human small intestine. [antibody concentration 3 ug/ml]

[Protocol Download](#)

- Immunoprecipitation

Immunoprecipitation of FAM3B transfected lysate using anti-FAM3B monoclonal antibody and Protein A Magnetic Bead, and immunoblotted with FAM3B MaxPab rabbit polyclonal antibody.

[Protocol Download](#)

- Sandwich ELISA (Recombinant protein)

Detection limit for recombinant GST tagged FAM3B is 1 ng/ml as a capture antibody.

[Protocol Download](#)

- ELISA

## Gene Info — FAM3B

Entrez GeneID

[54097](#)

GeneBank Accession#

[BC057829](#)

Protein Accession#	<a href="#">AAH57829.1</a>
Gene Name	FAM3B
Gene Alias	2-21, C21orf11, C21orf76, ORF9, PANDER, PRED44
Gene Description	family with sequence similarity 3, member B
Omim ID	<a href="#">608617</a>
Gene Ontology	<a href="#">Hyperlink</a>
Gene Summary	O
Other Designations	D21M16SJHU19e OTTHUMP00000109240 cytokine-like protein 2-21 pancreatic derived factor

## Disease

- [Tobacco Use Disorder](#)