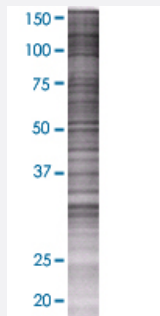


# BRWD1 293T Cell Transient Overexpression Lysate(Denatured)

Catalog # H00054014-T01

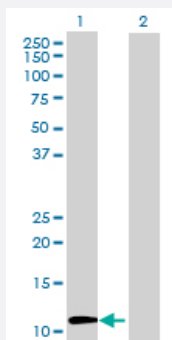
Size 100 uL

## Applications



### SDS-PAGE Gel

BRWD1 transfected lysate.



### Western Blot

Lane 1: BRWD1 transfected lysate ( 13.31 KDa)

Lane 2: Non-transfected lysate.

## Specification

Transfected Cell Line	293T
Plasmid	pCMV-BRWD1 full-length
Host	Human
Theoretical MW (kDa)	13.31
Interspecies Antigen Sequence	Mouse (98); Rat (98)

#### Quality Control Testing

Transient overexpression cell lysate was tested with Anti-BRWD1 antibody ([H00054014-B01](#)) by Western Blots.  
 SDS-PAGE Gel  
 BRWD1 transfected lysate.  
 Western Blot  
 Lane 1: BRWD1 transfected lysate ( 13.31 KDa)  
 Lane 2: Non-transfected lysate.

#### Storage Buffer

1X Sample Buffer (50 mM Tris-HCl, 2% SDS, 10% glycerol, 300 mM 2-mercaptoethanol, 0.01% Bromophenol blue)

#### Storage Instruction

Store at -80°C. Aliquot to avoid repeated freezing and thawing.

## Applications

- Western Blot

## Gene Info — BRWD1

#### Entrez GeneID

[54014](#)

#### GeneBank Accession#

[NM\\_001007246.1](#)

#### Protein Accession#

[NP\\_001007247.1](#)

#### Gene Name

BRWD1

#### Gene Alias

C21orf107, FLJ43918, N143, WDR9

#### Gene Description

bromodomain and WD repeat domain containing 1

#### Gene Ontology

[Hyperlink](#)

#### Gene Summary

This gene encodes a member of the WD repeat protein family. WD repeats are minimally conserved regions of approximately 40 amino acids typically bracketed by gly-his and trp-aspartate (GH-WD), which may facilitate formation of heterotrimeric or multiprotein complexes. Members of this family are involved in a variety of cellular processes, including cell cycle progression, signal transduction, apoptosis, and gene regulation. This protein contains 2 bromodomains and multiple WD repeats, and the function of this protein is not known. This gene is located within the Down syndrome region-2 on chromosome 21. Alternative splicing of this gene generates 3 transcript variants diverging at the 3' ends. [provided by RefSeq]

#### Other Designations

OTTHUMP00000068928|WD repeat domain 9|WD repeat protein WDR9-form2|cAMP response element binding and beta-transducin family-like|transcriptional unit N143

## Disease

- [Inflammatory Bowel Diseases](#)
- [Tobacco Use Disorder](#)