

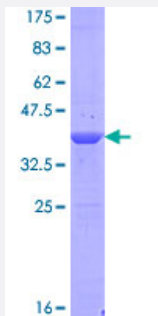
Full-Length

## BRWD1 (Human) Recombinant Protein (P01)

Catalog # H00054014-P01

Size 25 ug, 10 ug

### Applications



### Specification

Product Description	Human BRWD1 full-length ORF ( NP_001007247.1, 1 a.a. - 120 a.a.) recombinant protein with GST-tag at N-terminal.
Sequence	MAEPSSARRPVPLIESELYFLIARYLSAGPCRRAAQVLVQELEQYQLLPKRLDWEGNEHNRSYEE LVLSNKHVAPDHLLQICQRIGPMLDKEIPPSISRVTSLGAGRQSLLR TAKGTLI
Host	Wheat Germ (in vitro)
Theoretical MW (kDa)	40
Interspecies Antigen Sequence	Mouse (98); Rat (98)
Preparation Method	<a href="#">in vitro wheat germ expression system</a>
Purification	Glutathione Sepharose 4 Fast Flow
Quality Control Testing	12.5% SDS-PAGE Stained with Coomassie Blue.
Storage Buffer	50 mM Tris-HCl, 10 mM reduced Glutathione, pH=8.0 in the elution buffer.
Storage Instruction	Store at -80°C. Aliquot to avoid repeated freezing and thawing.
Note	Best use within three months from the date of receipt of this protein.

## Applications

- Enzyme-linked Immunoabsorbent Assay
- Western Blot (Recombinant protein)
- Antibody Production
- Protein Array

## Gene Info — BRWD1

Entrez GeneID [54014](#)

GeneBank Accession# [NM\\_001007246.1](#)

Protein Accession# [NP\\_001007247.1](#)

Gene Name BRWD1

Gene Alias C21orf107, FLJ43918, N143, WDR9

Gene Description bromodomain and WD repeat domain containing 1

Gene Ontology [Hyperlink](#)

**Gene Summary** This gene encodes a member of the WD repeat protein family. WD repeats are minimally conserved regions of approximately 40 amino acids typically bracketed by gly-his and trp-aspartic acid (GH-WD), which may facilitate formation of heterotrimeric or multiprotein complexes. Members of this family are involved in a variety of cellular processes, including cell cycle progression, signal transduction, apoptosis, and gene regulation. This protein contains 2 bromodomains and multiple WD repeats, and the function of this protein is not known. This gene is located within the Down syndrome region-2 on chromosome 21. Alternative splicing of this gene generates 3 transcript variants diverging at the 3' ends. [provided by RefSeq]

**Other Designations** OTTHUMP00000068928|WD repeat domain 9|WD repeat protein WDR9-form2|cAMP response element binding and beta-transducin family-like|transcriptional unit N143

## Disease

- [Inflammatory Bowel Diseases](#)
- [Tobacco Use Disorder](#)