

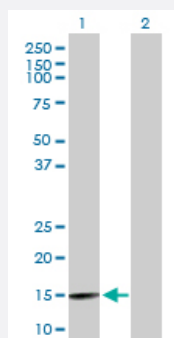
MaxPab®

BRWD1 purified MaxPab mouse polyclonal antibody (B01P)

Catalog # H00054014-B01P

Size 50 ug

Applications

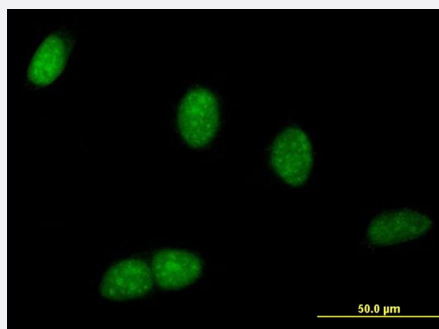


Western Blot (Transfected lysate)

Western Blot analysis of BRWD1 expression in transfected 293T cell line ([H00054014-T01](#)) by BRWD1 MaxPab polyclonal antibody.

Lane1:BRWD1 transfected lysate(13.2 KDa).

Lane2:Non-transfected lysate.



Immunofluorescence

Immunofluorescence of purified MaxPab antibody to BRWD1 on HeLa cell. [antibody concentration 10 ug/ml]

Specification

Product Description	Mouse polyclonal antibody raised against a full-length human BRWD1 protein.
Immunogen	BRWD1 (NP_001007247.1, 1 a.a. ~ 120 a.a) full-length human protein.
Sequence	MAEPSSARRPVPLIESELYFLIARYLSAGPCRRAAQVLVQEEQYQLLPKRLDWEGNEHNRSYEE LVLSNKHVAPDHLQICQRIGPMLDKEIPPSISRVTSLLGAGRQSLLRRTAKGTLI
Host	Mouse
Reactivity	Human

Interspecies Antigen Sequence	Mouse (98); Rat (98)
Quality Control Testing	Antibody reactive against mammalian transfected lysate.
Storage Buffer	In 1x PBS, pH 7.4
Storage Instruction	Store at -20°C or lower. Aliquot to avoid repeated freezing and thawing.

Applications

- Western Blot (Transfected lysate)

Western Blot analysis of BRWD1 expression in transfected 293T cell line ([H00054014-T01](#)) by BRWD1 MaxPab polyclonal antibody.

Lane1:BRWD1 transfected lysate(13.2 KDa).

Lane2:Non-transfected lysate.

[Protocol Download](#)

- Immunofluorescence

Immunofluorescence of purified MaxPab antibody to BRWD1 on HeLa cell. [antibody concentration 10 ug/ml]

Gene Info — BRWD1

Entrez GeneID	54014
GeneBank Accession#	NM_001007246.1
Protein Accession#	NP_001007247.1
Gene Name	BRWD1
Gene Alias	C21orf107, FLJ43918, N143, WDR9
Gene Description	bromodomain and WD repeat domain containing 1
Gene Ontology	Hyperlink

Gene Summary

This gene encodes a member of the WD repeat protein family. WD repeats are minimally conserved regions of approximately 40 amino acids typically bracketed by gly-his and trp-aspartate (GH-WD), which may facilitate formation of heterotrimeric or multiprotein complexes. Members of this family are involved in a variety of cellular processes, including cell cycle progression, signal transduction, apoptosis, and gene regulation. This protein contains 2 bromodomains and multiple WD repeats, and the function of this protein is not known. This gene is located within the Down syndrome region-2 on chromosome 21. Alternative splicing of this gene generates 3 transcript variants diverging at the 3' ends. [provided by RefSeq]

Other Designations

OTTHUMP00000068928|WD repeat domain 9|WD repeat protein WDR9-form2|cAMP response element binding and beta-transducin family-like|transcriptional unit N143

Disease

- [Inflammatory Bowel Diseases](#)
- [Tobacco Use Disorder](#)