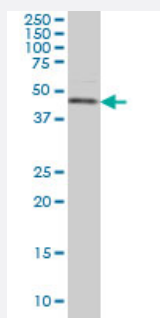


CSNK1G1 monoclonal antibody (M02), clone 2E10

Catalog # H00053944-M02

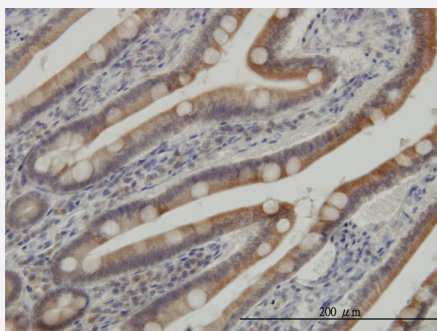
Size 100 ug

Applications



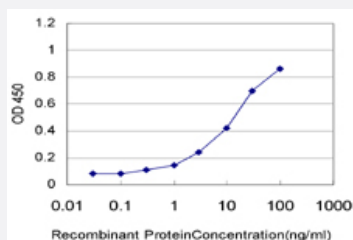
Western Blot (Cell lysate)

CSNK1G1 monoclonal antibody (M02), clone 2E10 Western Blot analysis of CSNK1G1 expression in HeLa S3 NE (Cat # L013V3).



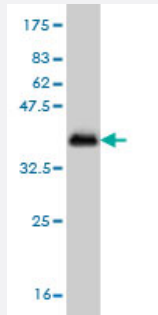
Immunohistochemistry (Formalin/PFA-fixed paraffin-embedded sections)

Immunoperoxidase of monoclonal antibody to CSNK1G1 on formalin-fixed paraffin-embedded human small Intestine. [antibody concentration 3 ug/ml]



Sandwich ELISA (Recombinant protein)

Detection limit for recombinant GST tagged CSNK1G1 is approximately 0.3ng/ml as a capture antibody.



Western Blot detection against Immunogen (36.74 KDa) .

Specification

Product Description	Mouse monoclonal antibody raised against a partial recombinant CSNK1G1.
Immunogen	CSNK1G1 (AAH17236, 293 a.a. ~ 393 a.a) partial recombinant protein with GST tag. MW of the GST tag alone is 26 KDa.
Sequence	KKGYTFDYAYDWVGRPIPTVGSVHVDGASAITRESHTHRDRPSQQQPLRNQVVSSTNGELNV DDPTGAHSNAPITAHAEVEVVEEAKCCCFKRRKKT
Host	Mouse
Reactivity	Human
Interspecies Antigen Sequence	Mouse (93); Rat (95)
Isotype	IgG3 Kappa
Quality Control Testing	Antibody Reactive Against Recombinant Protein. Western Blot detection against Immunogen (36.74 KDa) .
Storage Buffer	In 1x PBS, pH 7.4
Storage Instruction	Store at -20°C or lower. Aliquot to avoid repeated freezing and thawing.

Applications

- Western Blot (Cell lysate)

CSNK1G1 monoclonal antibody (M02), clone 2E10 Western Blot analysis of CSNK1G1 expression in Hela S3 NE (Cat # L013V3).

[Protocol Download](#)

- Western Blot (Recombinant protein)

[Protocol Download](#)

- Immunohistochemistry (Formalin/PFA-fixed paraffin-embedded sections)

Immunoperoxidase of monoclonal antibody to CSNK1G1 on formalin-fixed paraffin-embedded human small Intestine. [antibody concentration 3 ug/ml]

[Protocol Download](#)

- Sandwich ELISA (Recombinant protein)

Detection limit for recombinant GST tagged CSNK1G1 is approximately 0.3ng/ml as a capture antibody.

[Protocol Download](#)

- ELISA

Gene Info — CSNK1G1

Entrez GeneID [53944](#)

GeneBank Accession# [BC017236](#)

Protein Accession# [AAH17236](#)

Gene Name CSNK1G1

Gene Alias -

Gene Description casein kinase 1, gamma 1

Omim ID [606274](#)

Gene Ontology [Hyperlink](#)

Gene Summary Casein kinase I is the most abundant serine/threonine kinase in eukaryotic cell extracts. Multiple isoforms of the enzyme exist. The gamma-1 isoform is involved in growth and morphogenesis of eukaryotic cells.[supplied by OMIM]

Other Designations -

Pathway

- [Hedgehog signaling pathway](#)