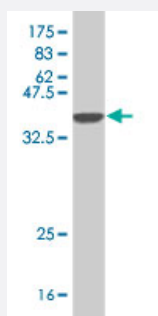


MYO3A polyclonal antibody (A01)

Catalog # H00053904-A01

Size 50 uL

Applications



Western Blot detection against Immunogen (36.01 KDa) .

Specification

Product Description	Mouse polyclonal antibody raised against a partial recombinant MYO3A.
Immunogen	MYO3A (NP_059129, 1400 a.a. ~ 1490 a.a) partial recombinant protein with GST tag.
Sequence	HEEINNIKKKDNKDSKATSEREACGLAIFSKQISKLSEEYFILQKKLNEMILSQQLKSLYLGVSHHKPI NRRVSSQQCLSGVCKGEEPIL
Host	Mouse
Reactivity	Human
Interspecies Antigen Sequence	Mouse (94)
Quality Control Testing	Antibody Reactive Against Recombinant Protein. Western Blot detection against Immunogen (36.01 KDa) .
Storage Buffer	50 % glycerol
Storage Instruction	Store at -20°C or lower. Aliquot to avoid repeated freezing and thawing.

Applications

- Western Blot (Recombinant protein)

[Protocol Download](#)

- ELISA

Gene Info — MYO3A

Entrez GeneID [53904](#)

GeneBank Accession# [NM_017433](#)

Protein Accession# [NP_059129](#)

Gene Name MYO3A

Gene Alias DFNB30

Gene Description myosin IIIA

Omim ID [606808 607101](#)

Gene Ontology [Hyperlink](#)

Gene Summary

The protein encoded by this gene belongs to the myosin superfamily. Myosins are actin-dependent motor proteins and are categorized into conventional myosins (class II) and unconventional myosins (classes I and III through XV) based on their variable C-terminal cargo-binding domains. Class III myosins, such as this one, have a kinase domain N-terminal to the conserved N-terminal motor domains and are expressed in photoreceptors. The protein encoded by this gene plays an important role in hearing in humans. Three different recessive, loss of function mutations in the encoded protein have been shown to cause nonsyndromic progressive hearing loss. Expression of this gene is highly restricted, with the strongest expression in retina and cochlea. [provided by RefSeq]

Other Designations OTTHUMP00000019339

Disease

- [Alzheimer Disease](#)
- [Anxiety Disorders](#)
- [Arthritis](#)
- [Colorectal Neoplasms](#)
- [Depressive Disorder](#)

- [Genetic Predisposition to Disease](#)
- [Kidney Failure](#)