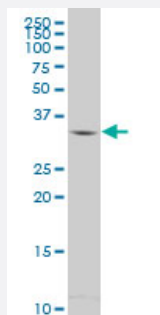


MBD3 polyclonal antibody (A01)

Catalog # H00053615-A01

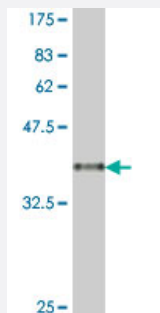
Size 50 uL

Applications



Western Blot (Cell lysate)

MBD3 polyclonal antibody (A01), Lot # 060509JCS1 Western Blot analysis of MBD3 expression in Y-79 (Cat # L042V1).



Western Blot detection against Immunogen (38.21 KDa) .

Specification

Product Description	Mouse polyclonal antibody raised against a partial recombinant MBD3.
Immunogen	MBD3 (NP_003917, 70 a.a. ~ 179 a.a) partial recombinant protein with GST tag.
Sequence	LMSKMNKSQRQVRVYDSSNQVKGKPDNLTPVRQTASIFKQPVTKITNHPSNKKVSDPQKAVDQ PRQLFWEKKLSGLNAFDIAEELVKMTMDLPKGLQGVPVGPCTDETLLS
Host	Mouse
Reactivity	Human
Interspecies Antigen Sequence	Mouse (95); Rat (95)

Quality Control Testing	Antibody Reactive Against Recombinant Protein. Western Blot detection against Immunogen (38.21 KDa) .
Storage Buffer	50 % glycerol
Storage Instruction	Store at -20°C or lower. Aliquot to avoid repeated freezing and thawing.

Applications

- Western Blot (Cell lysate)

MBD3 polyclonal antibody (A01), Lot # 060509JCS1 Western Blot analysis of MBD3 expression in Y-79 (Cat # L042V1).

[Protocol Download](#)

- Western Blot (Recombinant protein)

[Protocol Download](#)

- ELISA

Gene Info — MBD3

Entrez GeneID	53615
GeneBank Accession#	NM_003926
Protein Accession#	NP_003917
Gene Name	MBD3
Gene Alias	-
Gene Description	methyl-CpG binding domain protein 3
Omim ID	603573
Gene Ontology	Hyperlink

Gene Summary

DNA methylation is the major modification of eukaryotic genomes and plays an essential role in mammalian development. Human proteins MECP2, MBD1, MBD2, MBD3, and MBD4 comprise a family of nuclear proteins related by the presence in each of a methyl-CpG binding domain (MBD). However, unlike the other family members, MBD3 is not capable of binding to methylated DNA. The predicted MBD3 protein shares 71% and 94% identity with MBD2 (isoform 1) and mouse Mbd3. MBD3 is a subunit of the NuRD, a multisubunit complex containing nucleosome remodeling and histone deacetylase activities. MBD3 mediates the association of metastasis-associated protein 2 (MTA2) with the core histone deacetylase complex. [provided by RefSeq]

Other Designations

-