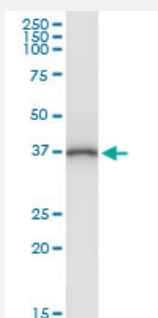


# PANK1 (Human) IP-WB Antibody Pair

Catalog # H00053354-PW1

Size 1 Set

## Applications



Immunoprecipitation of PANK1 transfected lysate using rabbit polyclonal anti-PANK1 and Protein A Magnetic Bead ([U0007](#)), and immunoblotted with mouse purified polyclonal anti-PANK1.

## Specification

<b>Product Description</b>	This IP-WB antibody pair set comes with one antibody for immunoprecipitation and another to detect the precipitated protein in western blot.
<b>Reactivity</b>	Human
<b>Interspecies Antigen Sequence</b>	Mouse (96); Rat (98)
<b>Quality Control Testing</b>	Immunoprecipitation-Western Blot (IP-WB) Immunoprecipitation of PANK1 transfected lysate using rabbit polyclonal anti-PANK1 and Protein A Magnetic Bead ( <a href="#">U0007</a> ), and immunoblotted with mouse purified polyclonal anti-PANK1.
<b>Supplied Product</b>	Antibody pair set content: 1. Antibody pair for IP: rabbit polyclonal anti-PANK1 (300 ul) 2. Antibody pair for WB: mouse purified polyclonal anti-PANK1 (50 ug)
<b>Storage Instruction</b>	Store reagents of the antibody pair set at -20°C or lower. Please aliquot to avoid repeated freeze thaw cycle. Reagents should be returned to -20°C storage immediately after use.

## Applications

- Immunoprecipitation-Western Blot

[Protocol Download](#)

## Gene Info — PANK1

**Entrez GeneID** [53354](#)

**Gene Name** PANK1

**Gene Alias** MGC24596, PANK, PANK1a, PANK1b

**Gene Description** pantothenate kinase 1

**Omim ID** [606160](#)

**Gene Ontology** [Hyperlink](#)

**Gene Summary** This gene encodes a protein belonging to the pantothenate kinase family. Pantothenate kinase is a key regulatory enzyme in the biosynthesis of coenzyme A (CoA) in bacteria and mammalian cells. It catalyzes the first committed step in the universal biosynthetic pathway leading to CoA and is itself subject to regulation through feedback inhibition by CoA. Alternative splicing has been observed at this locus and three variants, each encoding a distinct isoform, have been identified. [provided by RefSeq]

**Other Designations** OTTHUMP00000020071|OTTHUMP00000020072|pantothenic acid kinase

## Pathway

- [Metabolic pathways](#)
- [Pantothenate and CoA biosynthesis](#)

## Disease

- [Alzheimer Disease](#)
- [Disease Progression](#)
- [Disease Susceptibility](#)
- [Genetic Predisposition to Disease](#)
- [HIV Infections](#)

- [Tobacco Use Disorder](#)