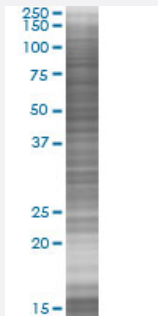


# ZFYVE1 293T Cell Transient Overexpression Lysate(Denatured)

Catalog # H00053349-T03

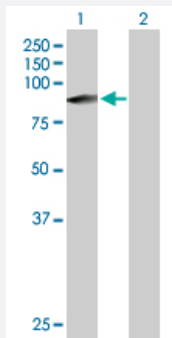
Size 100 uL

## Applications



### SDS-PAGE Gel

ZFYVE1 transfected lysate.



### Western Blot

Lane 1: ZFYVE1 transfected lysate ( 87.20 KDa)

Lane 2: Non-transfected lysate.

## Specification

Transfected Cell Line	293T
Plasmid	pCMV-ZFYVE1 full-length
Host	Human
Theoretical MW (kDa)	87.2
Interspecies Antigen Sequence	Mouse (96); Rat (96)

**Quality Control Testing**

Transient overexpression cell lysate was tested with Anti-ZFYVE1 antibody ([H00053349-B01P](#)) by Western Blots.  
SDS-PAGE Gel  
ZFYVE1 transfected lysate.  
Western Blot  
Lane 1: ZFYVE1 transfected lysate ( 87.20 KDa)  
Lane 2: Non-transfected lysate.

**Storage Buffer**

1X Sample Buffer (50 mM Tris-HCl, 2% SDS, 10% glycerol, 300 mM 2-mercaptoethanol, 0.01% Bromophenol blue)

**Storage Instruction**

Store at -80°C. Aliquot to avoid repeated freezing and thawing.

## Applications

- Western Blot

## Gene Info — ZFYVE1

**Entrez GeneID**[53349](#)**GeneBank Accession#**[NM\\_021260](#)**Protein Accession#**[NP\\_067083](#)**Gene Name**

ZFYVE1

**Gene Alias**

DFCP1, KIAA1589, TAFF1, ZNFN2A1

**Gene Description**

zinc finger, FYVE domain containing 1

**Omim ID**[605471](#)**Gene Ontology**[Hyperlink](#)**Gene Summary**

The FYVE domain mediates the recruitment of proteins involved in membrane trafficking and cell signaling to phosphatidylinositol 3-phosphate (PtdIns(3)P)-containing membranes. This gene encodes a protein which contains two zinc-binding FYVE domains in tandem. This protein displays a predominantly Golgi, endoplasmic reticulum and vesicular distribution. Alternatively spliced transcript variants have been found for this gene, and they encode two isoforms with different sizes. [provided by RefSeq]

**Other Designations**

double FYVE-containing protein 1|phosphoinositide-binding protein SR3|tandem FYVE fingers-1 protein|zinc finger protein, subfamily 2A (FYVE domain containing), 1|zinc finger protein, subfamily 2A, member 1