

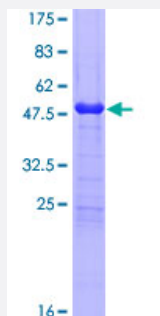
Full-Length

SPA17 (Human) Recombinant Protein (P02)

Catalog # H00053340-P02

Size 25 ug, 10 ug

Applications



Specification

Product Description	Human SPA17 full-length ORF (NP_059121.1, 1 a.a. - 151 a.a.) recombinant protein with GST-tag at N-terminal.
Sequence	MSIPFSNTHYRIPQGFGNLLEGLTREILREQPDNIPAFAAAYFESLLEKREKTNFDPAEWGSKVED RFYNNHAFEEQEPPEKSDPKQEESQISGKEEETSVTILDSSEEDKEKEEVAAVKIQAAFRGHIARE EAKKMKTNLSLQNEEKEENK
Host	Wheat Germ (in vitro)
Theoretical MW (kDa)	43.8
Interspecies Antigen Sequence	Mouse (72); Rat (72)
Preparation Method	in vitro wheat germ expression system
Purification	Glutathione Sepharose 4 Fast Flow
Quality Control Testing	12.5% SDS-PAGE Stained with Coomassie Blue.
Storage Buffer	50 mM Tris-HCl, 10 mM reduced Glutathione, pH=8.0 in the elution buffer.
Storage Instruction	Store at -80°C. Aliquot to avoid repeated freezing and thawing.

Note

Best use within three months from the date of receipt of this protein.

Applications

- Enzyme-linked Immunoabsorbent Assay
- Western Blot (Recombinant protein)
- Antibody Production
- Protein Array

Gene Info — SPA17

Entrez GeneID [53340](#)**GeneBank Accession#** [NM_017425.2](#)**Protein Accession#** [NP_059121.1](#)**Gene Name** SPA17**Gene Alias** SP17, SP17-1**Gene Description** sperm autoantigenic protein 17**Omim ID** [608621](#)**Gene Ontology** [Hyperlink](#)

Gene Summary This gene encodes a protein present at the cell surface. The N-terminus has sequence similarity to human cAMP-dependent protein kinase A (PKA) type II alpha regulatory subunit (RIIa) while the C-terminus has an IQ calmodulin-binding motif. The central portion of the protein has carbohydrate binding motifs and likely functions in cell-cell adhesion. The protein was initially characterized by its involvement in the binding of sperm to the zona pellucida of the oocyte. Recent studies indicate that it is also involved in additional cell-cell adhesion functions such as immune cell migration and metastasis. A retrotransposed pseudogene is present on chromosome 10q22

Other Designations sperm protein 17