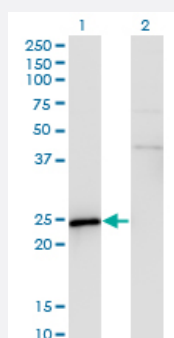


# SPA17 monoclonal antibody (M03), clone 3B6

Catalog # H00053340-M03

Size 100 ug

## Applications

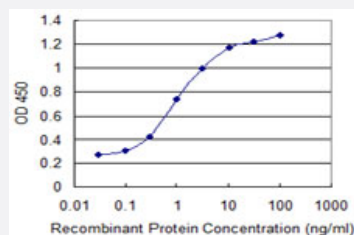


### Western Blot (Transfected lysate)

Western Blot analysis of SPA17 expression in transfected 293T cell line by SPA17 monoclonal antibody (M03), clone 3B6.

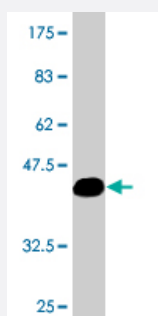
Lane 1: SPA17 transfected lysate (Predicted MW: 17.4 KDa).

Lane 2: Non-transfected lysate.



### Sandwich ELISA (Recombinant protein)

Detection limit for recombinant GST tagged SPA17 is 0.03 ng/ml as a capture antibody.



Western Blot detection against Immunogen (36.63 KDa) .

## Specification

### Product Description

Mouse monoclonal antibody raised against a partial recombinant SPA17.

<b>Immunogen</b>	SPA17 (NP_059121, 51 a.a. ~ 149 a.a) partial recombinant protein with GST tag. MW of the GST tag alone is 26 KDa.
<b>Sequence</b>	EKTNFDPAEWGSKVEDRFYNNHAFEEQEPPEKSDPKQEESQISGKEEETSVTILDSSEEDKEKE EVAAVKIQAAFRGHIAREEEAKKMKTNSLQNEEKEE
<b>Host</b>	Mouse
<b>Reactivity</b>	Human
<b>Interspecies Antigen Sequence</b>	Mouse (72); Rat (72)
<b>Isotype</b>	IgG2a Kappa
<b>Quality Control Testing</b>	Antibody Reactive Against Recombinant Protein. Western Blot detection against Immunogen (36.63 KDa) .
<b>Storage Buffer</b>	In 1x PBS, pH 7.4
<b>Storage Instruction</b>	Store at -20°C or lower. Aliquot to avoid repeated freezing and thawing.

## Applications

- Western Blot (Transfected lysate)

Western Blot analysis of SPA17 expression in transfected 293T cell line by SPA17 monoclonal antibody (M03), clone 3B6.

Lane 1: SPA17 transfected lysate (Predicted MW: 17.4 KDa).

Lane 2: Non-transfected lysate.

[Protocol Download](#)

- Western Blot (Recombinant protein)

[Protocol Download](#)

- Sandwich ELISA (Recombinant protein)

Detection limit for recombinant GST tagged SPA17 is 0.03 ng/ml as a capture antibody.

[Protocol Download](#)

- ELISA

## Gene Info — SPA17

Entrez GeneID	<a href="#">53340</a>
GeneBank Accession#	<a href="#">NM_017425</a>
Protein Accession#	<a href="#">NP_059121</a>
Gene Name	SPA17
Gene Alias	SP17, SP17-1
Gene Description	sperm autoantigenic protein 17
Omim ID	<a href="#">608621</a>
Gene Ontology	<a href="#">Hyperlink</a>
Gene Summary	<p>This gene encodes a protein present at the cell surface. The N-terminus has sequence similarity to human cAMP-dependent protein kinase A (PKA) type II alpha regulatory subunit (RIIa) while the C-terminus has an IQ calmodulin-binding motif. The central portion of the protein has carbohydrate binding motifs and likely functions in cell-cell adhesion. The protein was initially characterized by its involvement in the binding of sperm to the zona pellucida of the oocyte. Recent studies indicate that it is also involved in additional cell-cell adhesion functions such as immune cell migration and metastasis. A retrotransposed pseudogene is present on chromosome 10q22</p>
Other Designations	sperm protein 17