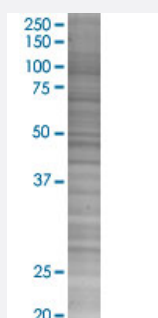


# CECR1 293T Cell Transient Overexpression Lysate(Denatured)

Catalog # H00051816-T02

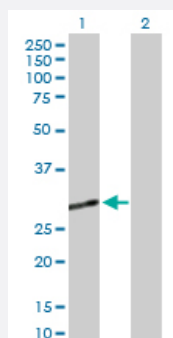
Size 100 uL

## Applications



### SDS-PAGE Gel

CECR1 transfected lysate.



### Western Blot

Lane 1: CECR1 transfected lysate ( 30.70 KDa)

Lane 2: Non-transfected lysate.

## Specification

**Transfected Cell Line** 293T

**Plasmid** pCMV-CECR1 full-length

**Host** Human

**Theoretical MW (kDa)** 30.7

**Quality Control Testing** Transient overexpression cell lysate was tested with Anti-CECR1 antibody ([H00051816-D01P](#)) by Western Blots.

SDS-PAGE Gel  
CECR1 transfected lysate.

Western Blot  
Lane 1: CECR1 transfected lysate ( 30.70 KDa)  
Lane 2: Non-transfected lysate.

<b>Storage Buffer</b>	1X Sample Buffer (50 mM Tris-HCl, 2% SDS, 10% glycerol, 300 mM 2-mercaptoethanol, 0.01% Bromophenol blue)
<b>Storage Instruction</b>	Store at -80°C. Aliquot to avoid repeated freezing and thawing.

## Applications

- Western Blot

## Gene Info — CECR1

<b>Entrez GeneID</b>	<a href="#">51816</a>
<b>GeneBank Accession#</b>	<a href="#">NM_177405.1</a>
<b>Protein Accession#</b>	<a href="#">NP_803124.1</a>
<b>Gene Name</b>	CECR1
<b>Gene Alias</b>	ADGF, IDGFL
<b>Gene Description</b>	cat eye syndrome chromosome region, candidate 1
<b>Omim ID</b>	<a href="#">607575</a>
<b>Gene Ontology</b>	<a href="#">Hyperlink</a>
<b>Gene Summary</b>	This gene encodes a member of a subfamily of the adenosine deaminase protein family. The encoded protein may act as a growth factor and have adenosine deaminase activity. It may be responsible for some of the phenotypic features associated with cat eye syndrome. Two transcript variants encoding distinct isoforms have been identified for this gene. [provided by RefSeq]
<b>Other Designations</b>	OTTHUMP00000028854 OTTHUMP00000196142 cat eye syndrome critical region protein 1

## Disease

- [Tobacco Use Disorder](#)