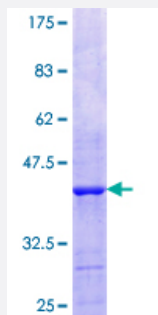


CECR1 (Human) Recombinant Protein (Q01)

Catalog # H00051816-Q01

Size 25 ug, 10 ug

Applications



Specification

Product Description	Human CECR1 partial ORF (NP_059120.2, 402 a.a. - 511 a.a.) recombinant protein with GST-tag at N-terminal.
Sequence	DIPIEVCPISNQVLKLVSDLRNHPVATLMATGHPMVISSDDPAMFGAKGLSYDFYEVFMGIGGMKADLRTLKQLAMNSIKYSTLLESEKNTFMEIWKKRWDFIADVATK
Host	Wheat Germ (in vitro)
Theoretical MW (kDa)	37.84
Preparation Method	in vitro wheat germ expression system
Purification	Glutathione Sepharose 4 Fast Flow
Quality Control Testing	12.5% SDS-PAGE Stained with Coomassie Blue.
Storage Buffer	50 mM Tris-HCl, 10 mM reduced Glutathione, pH=8.0 in the elution buffer.
Storage Instruction	Store at -80°C. Aliquot to avoid repeated freezing and thawing.
Note	Best use within three months from the date of receipt of this protein.

Applications

- Enzyme-linked Immunoabsorbent Assay
- Western Blot (Recombinant protein)
- Antibody Production
- Protein Array

Gene Info — CECR1

Entrez GeneID [51816](#)

GeneBank Accession# [NM_017424](#)

Protein Accession# [NP_059120.2](#)

Gene Name CECR1

Gene Alias ADGF, IDGFL

Gene Description cat eye syndrome chromosome region, candidate 1

Omim ID [607575](#)

Gene Ontology [Hyperlink](#)

Gene Summary This gene encodes a member of a subfamily of the adenosine deaminase protein family. The encoded protein may act as a growth factor and have adenosine deaminase activity. It may be responsible for some of the phenotypic features associated with cat eye syndrome. Two transcript variants encoding distinct isoforms have been identified for this gene. [provided by RefSeq]

Other Designations OTTHUMP00000028854|OTTHUMP00000196142|cat eye syndrome critical region protein 1

Disease

- [Tobacco Use Disorder](#)