

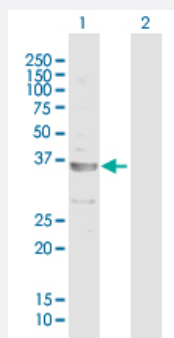
MaxPab®

# CECR1 purified MaxPab mouse polyclonal antibody (B01P)

Catalog # H00051816-B01P

Size 50 ug

## Applications



### Western Blot (Transfected lysate)

Western Blot analysis of CECR1 expression in transfected 293T cell line ([H00051816-T01](#)) by CECR1 MaxPab polyclonal antibody.

Lane 1: CECR1 transfected lysate(29.7 KDa).

Lane 2: Non-transfected lysate.

## Specification

### Product Description

Mouse polyclonal antibody raised against a full-length human CECR1 protein.

### Immunogen

CECR1 (NP\_803124.1, 1 a.a. ~ 270 a.a) full-length human protein.

### Sequence

MDSLEWNWALVYELSGEHHDEEWSVKTYQEVAQKFVETHPEFIGIKIYSDHRSKDVAVIAESIRM  
AMGLRIKFPTVVAGFDLVGHEDTGHSLHDYKEALMIPAKDGVKLPYFFHAGETDWQGTSIDRNILD  
ALMLNTTRIGHGFALSKHPAVRTYSWKKDIPIEVCPISNQVLKLVSDLRNHPVATLMATGHPMVISS  
DDPAMFGAKGLSYDFYEVFMGIGGMKADLRTLKQLAMNSIKYSTLLESEKNTFMIEWKKRWDFI  
ADVATK

### Host

Mouse

### Reactivity

Human

### Quality Control Testing

Antibody reactive against mammalian transfected lysate.

### Storage Buffer

In 1x PBS, pH 7.4

### Storage Instruction

Store at -20°C or lower. Aliquot to avoid repeated freezing and thawing.

## Applications

- Western Blot (Transfected lysate)

Western Blot analysis of CECR1 expression in transfected 293T cell line ([H00051816-T01](#)) by CECR1 MaxPab polyclonal antibody.

Lane 1: CECR1 transfected lysate(29.7 KDa).

Lane 2: Non-transfected lysate.

[Protocol Download](#)

## Gene Info — CECR1

Entrez GeneID [51816](#)

GeneBank Accession# [NM\\_177405.1](#)

Protein Accession# [NP\\_803124.1](#)

Gene Name CECR1

Gene Alias ADGF, IDGFL

Gene Description cat eye syndrome chromosome region, candidate 1

Omim ID [607575](#)

Gene Ontology [Hyperlink](#)

**Gene Summary** This gene encodes a member of a subfamily of the adenosine deaminase protein family. The encoded protein may act as a growth factor and have adenosine deaminase activity. It may be responsible for some of the phenotypic features associated with cat eye syndrome. Two transcript variants encoding distinct isoforms have been identified for this gene. [provided by RefSeq]

**Other Designations** OTTHUMP00000028854|OTTHUMP00000196142|cat eye syndrome critical region protein 1

## Disease

- [Tobacco Use Disorder](#)