

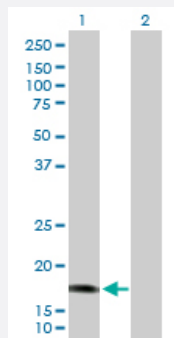
MaxPab®

CALML5 purified MaxPab rabbit polyclonal antibody (D01P)

Catalog # H00051806-D01P

Size 100 ug

Applications



Western Blot (Transfected lysate)

Western Blot analysis of CALML5 expression in transfected 293T cell line ([H00051806-T02](#)) by CALML5 MaxPab polyclonal antibody.

Lane 1: CALML5 transfected lysate(15.90 KDa).

Lane 2: Non-transfected lysate.

Specification

Product Description	Rabbit polyclonal antibody raised against a full-length human CALML5 protein.
Immunogen	CALML5 (AAH39172.1, 1 a.a. ~ 146 a.a) full-length human protein.
Sequence	MAGELTPEEEAQYKKAFSAVDTDGNGTINAQELGAALKATGKNLSEAQLRKLISEVDGDGDGEIS FQEFLTAARKARAGLEDLQVAFRAFDQDGDGHITVDELRRAMAGLGQPLPQEELDAMIREADV QDGRVNYEEFARMLAQE
Host	Rabbit
Reactivity	Human
Interspecies Antigen Sequence	Mouse (51); Rat (51)
Quality Control Testing	Antibody reactive against mammalian transfected lysate.
Storage Buffer	In 1x PBS, pH 7.4
Storage Instruction	Store at -20°C or lower. Aliquot to avoid repeated freezing and thawing.

Applications

- Western Blot (Transfected lysate)

Western Blot analysis of CALML5 expression in transfected 293T cell line ([H00051806-T02](#)) by CALML5 MaxPab polyclonal antibody.

Lane 1: CALML5 transfected lysate(15.90 KDa).

Lane 2: Non-transfected lysate.

[Protocol Download](#)

Gene Info — CALML5

Entrez GeneID [51806](#)

GeneBank Accession# [BC039172.1](#)

Protein Accession# [AAH39172.1](#)

Gene Name CALML5

Gene Alias CLSP

Gene Description calmodulin-like 5

Omim ID [605183](#)

Gene Ontology [Hyperlink](#)

Gene Summary This gene encodes a novel calcium binding protein expressed in the epidermis and related to the calmodulin family of calcium binding proteins. Functional studies with recombinant protein demonstrate it does bind calcium and undergoes a conformational change when it does so. Abundant expression is detected only in reconstructed epidermis and is restricted to differentiating keratinocytes. In addition, it can associate with transglutaminase 3, shown to be a key enzyme in the terminal differentiation of keratinocytes. [provided by RefSeq]

Other Designations OTTHUMP00000019005|calmodulin-like skin protein

Pathway

- [Calcium signaling pathway](#)
- [Glioma](#)
- [GnRH signaling pathway](#)

- [Insulin signaling pathway](#)
- [Long-term potentiation](#)
- [Melanogenesis](#)
- [Neurotrophin signaling pathway](#)
- [Olfactory transduction](#)
- [Phosphatidylinositol signaling system](#)
- [Vascular smooth muscle contraction](#)