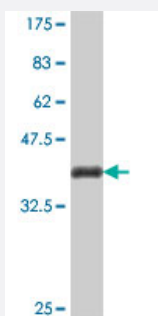


CALML5 polyclonal antibody (A01)

Catalog # H00051806-A01

Size 50 uL

Applications



Western Blot detection against Immunogen (37.11 KDa) .

Specification

Product Description	Mouse polyclonal antibody raised against a partial recombinant CALML5.
Immunogen	CALML5 (NP_059118, 47 a.a. ~ 146 a.a) partial recombinant protein with GST tag.
Sequence	AQLRKLISEVDSGDGEISFQEFLTAARKARAGLEDLQVAFRAFDQDGDGHITVDELRRAMAGLG QPLPQEELDAMIREADVDQDGRVNYEEFARMLAQE
Host	Mouse
Reactivity	Human
Interspecies Antigen Sequence	Mouse (51); Rat (51)
Quality Control Testing	Antibody Reactive Against Recombinant Protein. Western Blot detection against Immunogen (37.11 KDa) .
Storage Buffer	50 % glycerol
Storage Instruction	Store at -20°C or lower. Aliquot to avoid repeated freezing and thawing.

Applications

- Western Blot (Recombinant protein)

[Protocol Download](#)

- ELISA

Gene Info — CALML5

Entrez GeneID [51806](#)

GeneBank Accession# [NM_017422](#)

Protein Accession# [NP_059118](#)

Gene Name CALML5

Gene Alias CLSP

Gene Description calmodulin-like 5

Omim ID [605183](#)

Gene Ontology [Hyperlink](#)

Gene Summary This gene encodes a novel calcium binding protein expressed in the epidermis and related to the calmodulin family of calcium binding proteins. Functional studies with recombinant protein demonstrate it does bind calcium and undergoes a conformational change when it does so. Abundant expression is detected only in reconstructed epidermis and is restricted to differentiating keratinocytes. In addition, it can associate with transglutaminase 3, shown to be a key enzyme in the terminal differentiation of keratinocytes. [provided by RefSeq]

Other Designations OTTHUMP00000019005|calmodulin-like skin protein

Pathway

- [Calcium signaling pathway](#)
- [Glioma](#)
- [GnRH signaling pathway](#)
- [Insulin signaling pathway](#)
- [Long-term potentiation](#)
- [Melanogenesis](#)

- [Neurotrophin signaling pathway](#)
- [Olfactory transduction](#)
- [Phosphatidylinositol signaling system](#)
- [Vascular smooth muscle contraction](#)