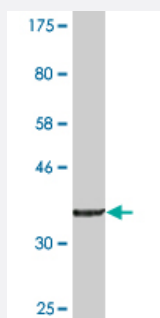


# ZAK monoclonal antibody (M07A), clone 4C4

Catalog # H00051776-M07A

Size 200 uL

## Applications



Western Blot detection against Immunogen (38.83 KDa) .

## Specification

<b>Product Description</b>	Mouse monoclonal antibody raised against a partial recombinant ZAK.
<b>Immunogen</b>	ZAK (AAH01401, 1 a.a. ~ 120 a.a) partial recombinant protein with GST tag. MW of the GST tag alone is 26 KDa.
<b>Sequence</b>	MSSLGASFVQIKFDDLQFFENC GGSGFSVYRAKWISQDKEVAVKLLKIEKEAEILSVLSHRNIQ FYGVILEPPNYGMTEYASLGSLYDYINSRSEEMDMDHIMTWATDVAKGMHY
<b>Host</b>	Mouse
<b>Reactivity</b>	Human
<b>Interspecies Antigen Sequence</b>	Mouse (92)
<b>Isotype</b>	IgG2a Kappa
<b>Quality Control Testing</b>	Antibody Reactive Against Recombinant Protein. Western Blot detection against Immunogen (38.83 KDa) .
<b>Storage Buffer</b>	In ascites fluid
<b>Storage Instruction</b>	Store at -20°C or lower. Aliquot to avoid repeated freezing and thawing.

## Applications

- Western Blot (Recombinant protein)

[Protocol Download](#)

- ELISA

## Gene Info — ZAK

Entrez GeneID [51776](#)

GeneBank Accession# [BC001401](#)

Protein Accession# [AAH01401](#)

Gene Name ZAK

Gene Alias AZK, MLK7, MLT, MLTK, MRK, mlklak

Gene Description sterile alpha motif and leucine zipper containing kinase AZK

Omim ID [609479](#)

Gene Ontology [Hyperlink](#)

**Gene Summary** This gene is a member of the MAPKKK family of signal transduction molecules and encodes a protein with an N-terminal kinase catalytic domain, followed by a leucine zipper motif and a sterile-alpha motif (SAM). This magnesium-binding protein forms homodimers and is located in the cytoplasm. The protein mediates gamma radiation signaling leading to cell cycle arrest and activity of this protein plays a role in cell cycle checkpoint regulation in cells. The protein also has pro-apoptotic activity. Alternate transcriptional splice variants, encoding different isoforms, have been characterized. [provided by RefSeq]

**Other Designations** MLK-like mitogen-activated protein triple kinase|MLK-related kinase|cervical cancer suppressor gene 4 protein|leucine zipper- and sterile alpha motif-containing kinase|mitogen-activated protein kinase kinase kinase MLT|mixed lineage kinase 7|mixed lineage

## Pathway

- [MAPK signaling pathway](#)
- [Tight junction](#)

## Disease

- [Kidney Failure](#)
- [Tobacco Use Disorder](#)