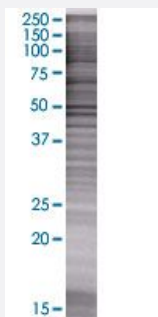


RP6-213H19.1 293T Cell Transient Overexpression Lysate(Denatured)

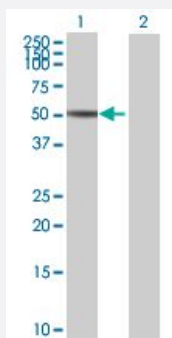
Catalog # H00051765-T01 Size 100 uL

Applications



SDS-PAGE Gel

RP6-213H19.1 transfected lysate.



Western Blot

Lane 1: RP6-213H19.1 transfected lysate (45.87 KDa)

Lane 2: Non-transfected lysate.

Specification

Transfected Cell Line	293T
Plasmid	pCMV-RP6-213H19.1 full-length
Host	Human
Theoretical MW (kDa)	45.87
Interspecies Antigen Sequence	Mouse (98); Rat (98)

Quality Control Testing

Transient overexpression cell lysate was tested with Anti-RP6-213H19.1 antibody ([H00051765-B01](#)) by Western Blots.
 SDS-PAGE Gel
 RP6-213H19.1 transfected lysate.
 Western Blot
 Lane 1: RP6-213H19.1 transfected lysate (45.87 KDa)
 Lane 2: Non-transfected lysate.

Storage Buffer

1X Sample Buffer (50 mM Tris-HCl, 2% SDS, 10% glycerol, 300 mM 2-mercaptoethanol, 0.01% Bromophenol blue)

Storage Instruction

Store at -80°C. Aliquot to avoid repeated freezing and thawing.

Applications

- Western Blot

Gene Info — RP6-213H19.1

Entrez GeneID

[51765](#)

GeneBank Accession#

[NM_016542.3](#)

Protein Accession#

[NP_057626.2](#)

Gene Name

RP6-213H19.1

Gene Alias

MASK, MST4

Gene Description

serine/threonine protein kinase MST4

Omim ID

[300547](#)

Gene Ontology

[Hyperlink](#)

Gene Summary

The product of this gene is a member of the GCK group III family of kinases, which are a subset of the Ste20-like kinases. The encoded protein contains an amino-terminal kinase domain, and a carboxy-terminal regulatory domain that mediates homodimerization. The protein kinase localizes to the Golgi apparatus and is specifically activated by binding to the Golgi matrix protein GM130. It is also cleaved by caspase-3 in vitro, and may function in the apoptotic pathway. Several alternatively spliced transcript variants of this gene have been described, but the full-length nature of some of these variants has not been determined. [provided by RefSeq]

Other Designations

Mst3 and SOK1-related kinase|STE20-like kinase MST4|mammalian Ste20-like protein kinase 4|mammalian sterile 20-like 4|serine/threonine protein kinase MASK