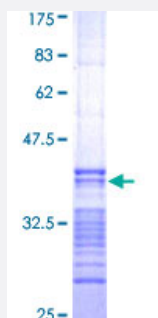


MASK (Human) Recombinant Protein (Q01)

Catalog # H00051765-Q01

Size 10 ug, 25 ug

Applications



Specification

Product Description	Human MASK partial ORF (AAH17213, 1 a.a. - 90 a.a.) recombinant protein with GST-tag at N-terminal.
Sequence	MAHSPVAVQVPGMQNNIADPEELFTKLERIGKGSFGEVFKGIDNRTQQVVAIKIDLEEADEIEDIQ QEITVLSQCDSSYVTKYYGSYL
Host	Wheat Germ (in vitro)
Theoretical MW (kDa)	35.53
Interspecies Antigen Sequence	Mouse (98); Rat (98)
Preparation Method	in vitro wheat germ expression system
Purification	Glutathione Sepharose 4 Fast Flow
Quality Control Testing	12.5% SDS-PAGE Stained with Coomassie Blue.
Storage Buffer	50 mM Tris-HCl, 10 mM reduced Glutathione, pH=8.0 in the elution buffer.
Storage Instruction	Store at -80°C. Aliquot to avoid repeated freezing and thawing.
Note	Best use within three months from the date of receipt of this protein.

Applications

- Enzyme-linked Immunoabsorbent Assay
- Western Blot (Recombinant protein)
- Antibody Production
- Protein Array

Gene Info — RP6-213H19.1

Entrez GeneID [51765](#)

GeneBank Accession# [BC017213](#)

Protein Accession# [AAH17213](#)

Gene Name RP6-213H19.1

Gene Alias MASK, MST4

Gene Description serine/threonine protein kinase MST4

Omim ID [300547](#)

Gene Ontology [Hyperlink](#)

Gene Summary The product of this gene is a member of the GCK group III family of kinases, which are a subset of the Ste20-like kinases. The encoded protein contains an amino-terminal kinase domain, and a carboxy-terminal regulatory domain that mediates homodimerization. The protein kinase localizes to the Golgi apparatus and is specifically activated by binding to the Golgi matrix protein GM130. It is also cleaved by caspase-3 in vitro, and may function in the apoptotic pathway. Several alternatively spliced transcript variants of this gene have been described, but the full-length nature of some of these variants has not been determined. [provided by RefSeq]

Other Designations Mst3 and SOK1-related kinase|STE20-like kinase MST4|mammalian Ste20-like protein kinase 4|mammalian sterile 20-like 4|serine/threonine protein kinase MASK