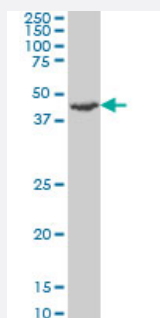


RP6-213H19.1 monoclonal antibody (M03), clone 3G5

Catalog # H00051765-M03

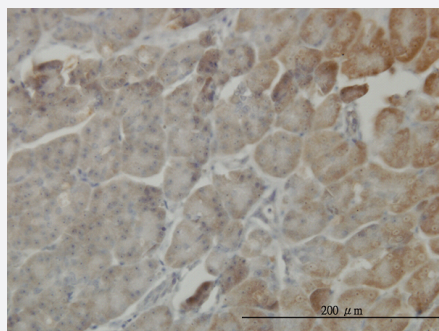
Size 100 ug

Applications



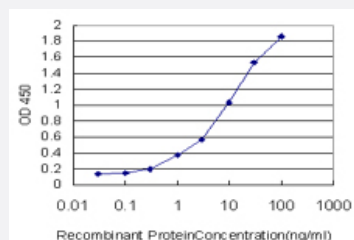
Western Blot (Cell lysate)

RP6-213H19.1 monoclonal antibody (M03), clone 3G5 Western Blot analysis of RP6-213H19.1 expression in HL-60 (Cat # L014V1).



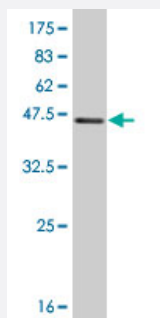
Immunohistochemistry (Formalin/PFA-fixed paraffin-embedded sections)

Immunoperoxidase of monoclonal antibody to RP6-213H19.1 on formalin-fixed paraffin-embedded human pancreas. [antibody concentration 3 ug/ml]



Sandwich ELISA (Recombinant protein)

Detection limit for recombinant GST tagged RP6-213H19.1 is approximately 0.1ng/ml as a capture antibody.



Western Blot detection against Immunogen (40.81 KDa) .

Specification

Product Description	Mouse monoclonal antibody raised against a full length recombinant RP6-213H19.1.
Immunogen	RP6-213H19.1 (AAH17213, 1 a.a. ~ 137 a.a) full-length recombinant protein with GST tag. MW of the GST tag alone is 26 KDa.
Sequence	MAHSPVAVQVPGMQNNIADPEELFTKLERIGKGSFGEVFKGIDNRTQQVVAIKIIDLEEADEIEDIQ QEITVLSQCDSSYVTKYYSYLKGSKLWIIMEYLGGSALDLLRALPPYERSLIQRKYRMGQSKILCK P
Host	Mouse
Reactivity	Human
Interspecies Antigen Sequence	Mouse (98); Rat (98)
Isotype	IgG1 Kappa
Quality Control Testing	Antibody Reactive Against Recombinant Protein. Western Blot detection against Immunogen (40.81 KDa) .
Storage Buffer	In 1x PBS, pH 7.4
Storage Instruction	Store at -20°C or lower. Aliquot to avoid repeated freezing and thawing.

Applications

- Western Blot (Cell lysate)

RP6-213H19 1 monoclonal antibody (M03), clone 3G5 Western Blot analysis of RP6-213H19 1 expression in HL-60 (Cat # L014V1).

[Protocol Download](#)

- Western Blot (Recombinant protein)

[Protocol Download](#)

- Immunohistochemistry (Formalin/PFA-fixed paraffin-embedded sections)

Immunoperoxidase of monoclonal antibody to RP6-213H19.1 on formalin-fixed paraffin-embedded human pancreas. [antibody concentration 3 ug/ml]

[Protocol Download](#)

- Sandwich ELISA (Recombinant protein)

Detection limit for recombinant GST tagged RP6-213H19.1 is approximately 0.1ng/ml as a capture antibody.

[Protocol Download](#)

- ELISA

Gene Info — RP6-213H19.1

Entrez GeneID [51765](#)

GeneBank Accession# [BC017213](#)

Protein Accession# [AAH17213](#)

Gene Name RP6-213H19.1

Gene Alias MASK, MST4

Gene Description serine/threonine protein kinase MST4

Omim ID [300547](#)

Gene Ontology [Hyperlink](#)

Gene Summary The product of this gene is a member of the GCK group III family of kinases, which are a subset of the Ste20-like kinases. The encoded protein contains an amino-terminal kinase domain, and a carboxy-terminal regulatory domain that mediates homodimerization. The protein kinase localizes to the Golgi apparatus and is specifically activated by binding to the Golgi matrix protein GM130. It is also cleaved by caspase-3 in vitro, and may function in the apoptotic pathway. Several alternatively spliced transcript variants of this gene have been described, but the full-length nature of some of these variants has not been determined. [provided by RefSeq]

Other Designations Mst3 and SOK1-related kinase|STE20-like kinase MST4|mammalian Ste20-like protein kinase 4|mammalian sterile 20-like 4|serine/threonine protein kinase MASK