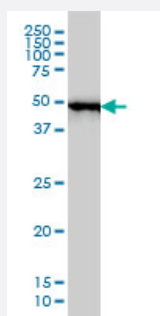


# RP6-213H19.1 monoclonal antibody (M01), clone 2G6

Catalog # H00051765-M01

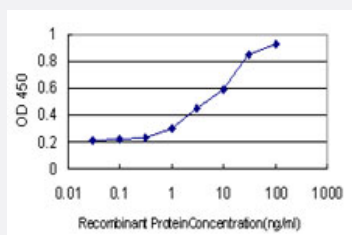
Size 100 ug

## Applications



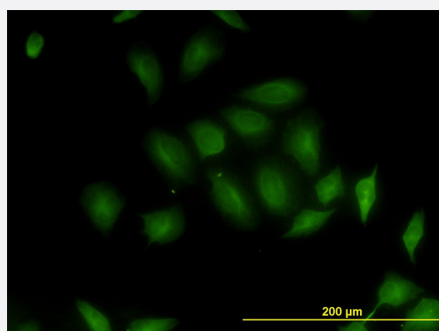
### Western Blot (Cell lysate)

RP6-213H19.1 monoclonal antibody (M01), clone 2G6 Western Blot analysis of RP6-213H19.1 expression in MCF-7 ( Cat # L046V1 ).



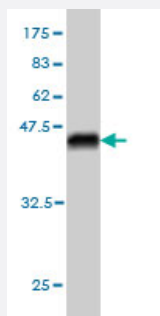
### Sandwich ELISA (Recombinant protein)

Detection limit for recombinant GST tagged RP6-213H19.1 is approximately 0.3ng/ml as a capture antibody.



### Immunofluorescence

Immunofluorescence of monoclonal antibody to RP6-213H19.1 on HeLa cell. [antibody concentration 10 ug/ml]



Western Blot detection against Immunogen (40.81 KDa) .

## Specification

|                                      |   |
|--------------------------------------|---|
| <b>Product Description</b>           | Mouse monoclonal antibody raised against a full length recombinant RP6-213H19.1.  |
| <b>Immunogen</b>                     | RP6-213H19.1 (AAH17213, 1 a.a. ~ 137 a.a) full-length recombinant protein with GST tag. MW of the GST tag alone is 26 KDa.                      |
| <b>Sequence</b>                      | MAHSPVAVQVPGMQNNIADPEELFTKLERIGKGSFGEVFKGIDNRTQQVVAIKIIDLEEADEIEDIQ<br>QEITVLSQCDSSYVTKYYGSYLKGSKLWIIMEYLGGSALDLLRALPPYERSLIQRKYRMGQSKILCK<br>P |
| <b>Host</b>                          | Mouse   |
| <b>Reactivity</b>                    | Human   |
| <b>Interspecies Antigen Sequence</b> | Mouse (98); Rat (98)  |
| <b>Isotype</b>                       | IgG2b Kappa   |
| <b>Quality Control Testing</b>       | Antibody Reactive Against Recombinant Protein.<br>Western Blot detection against Immunogen (40.81 KDa) .  |
| <b>Storage Buffer</b>                | In 1x PBS, pH 7.4   |
| <b>Storage Instruction</b>           | Store at -20°C or lower. Aliquot to avoid repeated freezing and thawing.  |

## Applications

- Western Blot (Cell lysate)

RP6-213H19 1 monoclonal antibody (M01), clone 2G6 Western Blot analysis of RP6-213H19 1 expression in MCF-7 ( Cat # L046V1 ).

[Protocol Download](#)

- Western Blot (Recombinant protein)

[Protocol Download](#)

- Sandwich ELISA (Recombinant protein)

Detection limit for recombinant GST tagged RP6-213H19.1 is approximately 0.3ng/ml as a capture antibody.

[Protocol Download](#)

- ELISA

- Immunofluorescence

Immunofluorescence of monoclonal antibody to RP6-213H19.1 on HeLa cell. [antibody concentration 10 ug/ml]

## Gene Info — RP6-213H19.1

Entrez GeneID [51765](#)

GeneBank Accession# [BC017213](#)

Protein Accession# [AAH17213](#)

Gene Name RP6-213H19.1

Gene Alias MASK, MST4

Gene Description serine/threonine protein kinase MST4

Omim ID [300547](#)

Gene Ontology [Hyperlink](#)

**Gene Summary**

The product of this gene is a member of the GCK group III family of kinases, which are a subset of the Ste20-like kinases. The encoded protein contains an amino-terminal kinase domain, and a carboxy-terminal regulatory domain that mediates homodimerization. The protein kinase localizes to the Golgi apparatus and is specifically activated by binding to the Golgi matrix protein GM130. It is also cleaved by caspase-3 in vitro, and may function in the apoptotic pathway. Several alternatively spliced transcript variants of this gene have been described, but the full-length nature of some of these variants has not been determined. [provided by RefSeq]

**Other Designations**

Mst3 and SOK1-related kinase|STE20-like kinase MST4|mammalian Ste20-like protein kinase 4|mammalian sterile 20-like 4|serine/threonine protein kinase MASK