

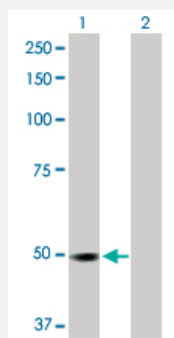
MaxPab®

RP6-213H19.1 purified MaxPab rabbit polyclonal antibody (D01P)

Catalog # H00051765-D01P

Size 100 ug

Applications



Western Blot (Transfected lysate)

Western Blot analysis of RP6-213H19.1 expression in transfected 293T cell line ([H00051765-T02](#)) by RP6-213H19.1 MaxPab polyclonal antibody.

Lane 1: RP6-213H19.1 transfected lysate(46.50 KDa).

Lane 2: Non-transfected lysate.

Specification

Product Description	Rabbit polyclonal antibody raised against a full-length human RP6-213H19.1 protein.
Immunogen	RP6-213H19.1 (NP_057626.2, 1 a.a. ~ 416 a.a) full-length human protein.
Sequence	MAHSPVAVQVPGMQNNIADPEELFTKLERIGKGSFGEVFKGIDNRTQQVVAIKIIDLEEADEIEDIQ QEITVLSQCDSSYVTKYYGSKLWIMEYLGGSALDLLRAGPFDEFQIATMLKEILKGLDYLH SEKKIHRDIKAANVLLSEQGDVKLADFGVAGQLTDTQIKRNTFVGTPFWMAPEVIQQSAYDSKADI WSLGITAIELAKGEPPNSDMHPMRVLFLLPKNNPPTLVGDFTKSFKEFIDACLNKDPSFRPTAKELL KHKFIVKNSKTSYLTIDRFKRWKAEGHSDDSDSEGSSESTSRNNTHPEWSFTTVRKKP DPKKVQNGAEQDLVQTLSCLSMITPAFAELKQQDENNASRNQAIEELEKSIATAEAAACPGITDKM VKKLIEKFQKCSADESP
Host	Rabbit
Reactivity	Human
Interspecies Antigen Sequence	Mouse (98); Rat (98)
Quality Control Testing	Antibody reactive against mammalian transfected lysate.
Storage Buffer	In 1x PBS, pH 7.4

Storage Instruction

Store at -20°C or lower. Aliquot to avoid repeated freezing and thawing.

Applications

- Western Blot (Transfected lysate)

Western Blot analysis of RP6-213H19.1 expression in transfected 293T cell line ([H00051765-T02](#)) by RP6-213H19.1 MaxPab polyclonal antibody.

Lane 1: RP6-213H19.1 transfected lysate(46.50 KDa).

Lane 2: Non-transfected lysate.

[Protocol Download](#)

Gene Info — RP6-213H19.1

Entrez GeneID [51765](#)

GeneBank Accession# [NM_016542.3](#)

Protein Accession# [NP_057626.2](#)

Gene Name RP6-213H19.1

Gene Alias MASK, MST4

Gene Description serine/threonine protein kinase MST4

Omim ID [300547](#)

Gene Ontology [Hyperlink](#)

Gene Summary The product of this gene is a member of the GCK group III family of kinases, which are a subset of the Ste20-like kinases. The encoded protein contains an amino-terminal kinase domain, and a carboxy-terminal regulatory domain that mediates homodimerization. The protein kinase localizes to the Golgi apparatus and is specifically activated by binding to the Golgi matrix protein GM130. It is also cleaved by caspase-3 in vitro, and may function in the apoptotic pathway. Several alternatively spliced transcript variants of this gene have been described, but the full-length nature of some of these variants has not been determined. [provided by RefSeq]

Other Designations Mst3 and SOK1-related kinase|STE20-like kinase MST4|mammalian Ste20-like protein kinase 4|mammalian sterile 20-like 4|serine/threonine protein kinase MASK