

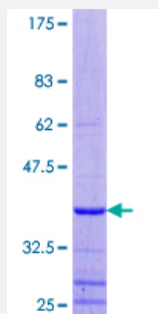
Full-Length

CROP (Human) Recombinant Protein (P01)

Catalog # H00051747-P01

Size 25 ug, 10 ug

Applications



Specification

Product Description	Human CROP full-length ORF (AAH56409.1, 1 a.a. - 79 a.a.) recombinant protein with GST-tag at N-terminal.
Sequence	MISAAQLLDDELMGRDRNLAPDEKRSNVRWDHESVCKYYLCGFCPAELFTNTRSDLDVFGRGDNI SDVSKFLEDDKWME
Host	Wheat Germ (in vitro)
Theoretical MW (kDa)	35.6
Interspecies Antigen Sequence	Mouse (100); Rat (100)
Preparation Method	in vitro wheat germ expression system
Purification	Glutathione Sepharose 4 Fast Flow
Quality Control Testing	12.5% SDS-PAGE Stained with Coomassie Blue.
Storage Buffer	50 mM Tris-HCl, 10 mM reduced Glutathione, pH=8.0 in the elution buffer.
Storage Instruction	Store at -80°C. Aliquot to avoid repeated freezing and thawing.
Note	Best use within three months from the date of receipt of this protein.

Applications

- Enzyme-linked Immunoabsorbent Assay
- Western Blot (Recombinant protein)
- Antibody Production
- Protein Array

Gene Info — CROP

Entrez GeneID	51747
GeneBank Accession#	BC056409.1
Protein Accession#	AAH56409.1
Gene Name	CROP
Gene Alias	LUC7A, OA48-18
Gene Description	cisplatin resistance-associated overexpressed protein
Omim ID	609434
Gene Ontology	Hyperlink
Gene Summary	This gene encodes a protein with an N-terminal half that contains cysteine/histidine motifs and leucine zipper-like repeats, and the C-terminal half is rich in arginine and glutamate residues (RE domain) and arginine and serine residues (RS domain). This protein localizes with a speckled pattern in the nucleus, and could be involved in the formation of spliceosome via the RE and RS domains. Two alternatively spliced transcript variants encoding the same protein have been found for this gene. [provided by RefSeq]
Other Designations	okadaic acid-inducible phosphoprotein

Disease

- [Genetic Predisposition to Disease](#)
- [Narcolepsy](#)