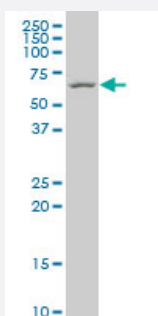


CROP polyclonal antibody (A01)

Catalog # H00051747-A01

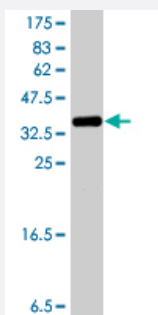
Size 50 uL

Applications



Western Blot (Cell lysate)

CROP polyclonal antibody (A01), Lot # 050928JC01 Western Blot analysis of CROP expression in Y-79 (Cat # L042V1).



Western Blot detection against Immunogen (38.21 KDa) .

Specification

Product Description	Mouse polyclonal antibody raised against a partial recombinant CROP.
Immunogen	CROP (NP_006098, 1 a.a. ~ 110 a.a) partial recombinant protein with GST tag.
Sequence	MISAAQLLDELMGRDRNLAPDEKRSNVRWDHESVCKYYLCGFCPAELFTNTRSDLGPCEKIHDE NLRKQYEKSSRFMKVGYERDFLRYLQSLLAEVERRIRRGHARLALS
Host	Mouse
Reactivity	Human
Interspecies Antigen Sequence	Mouse (100); Rat (100)

Quality Control Testing

Antibody Reactive Against Recombinant Protein.
Western Blot detection against Immunogen (38.21 KDa) .

Storage Buffer

50 % glycerol

Storage Instruction

Store at -20°C or lower. Aliquot to avoid repeated freezing and thawing.

Applications

- Western Blot (Cell lysate)

CROP polyclonal antibody (A01), Lot # 050928JC01 Western Blot analysis of CROP expression in Y-79 (Cat # L042V1).

[Protocol Download](#)

- Western Blot (Recombinant protein)

[Protocol Download](#)

- ELISA

Gene Info — CROP

Entrez GeneID

[51747](#)

GeneBank Accession#

[NM_006107](#)

Protein Accession#

[NP_006098](#)

Gene Name

CROP

Gene Alias

LUC7A, OA48-18

Gene Description

cisplatin resistance-associated overexpressed protein

Omim ID

[609434](#)

Gene Ontology

[Hyperlink](#)

Gene Summary

This gene encodes a protein with an N-terminal half that contains cysteine/histidine motifs and leucine zipper-like repeats, and the C-terminal half is rich in arginine and glutamate residues (RE domain) and arginine and serine residues (RS domain). This protein localizes with a speckled pattern in the nucleus, and could be involved in the formation of spliceosome via the RE and RS domains . Two alternatively spliced transcript variants encoding the same protein have been found for this gene. [provided by RefSeq]

Other Designations

okadaic acid-inducible phosphoprotein

Publication Reference

- [Proteome-Wide Identification of Novel Binding Partners to the Oncogenic Fusion Gene Protein, NPM-ALK, using Tandem Affinity Purification and Mass Spectrometry.](#)

Wu F, Wang P, Young LC, Lai R, Li L.

The American Journal of Pathology 2009 Feb; 174(2):361.

Application: WB-Ce, Human, SUP-M2, Karpas299

- [Novel splicing factor RBM25 modulates Bcl-x pre-mRNA 5' splice site selection.](#)

Zhou A, Ou AC, Cho A, Benz EJ Jr, Huang SC.

Molecular and Cellular Biology 2008 Jul; 28(19):5924.

Disease

- [Genetic Predisposition to Disease](#)
- [Narcolepsy](#)