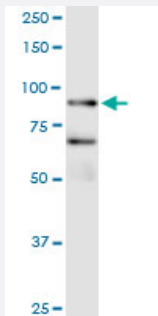


# FBXO40 (Human) IP-WB Antibody Pair

Catalog # H00051725-PW1

Size 1 Set

## Applications



Immunoprecipitation of FBXO40 transfected lysate using rabbit polyclonal anti-FBXO40 and Protein A Magnetic Bead ([U0007](#)), and immunoblotted with mouse purified polyclonal anti-FBXO40.

## Specification

<b>Product Description</b>	This IP-WB antibody pair set comes with one antibody for immunoprecipitation and another to detect the precipitated protein in western blot.
<b>Reactivity</b>	Human
<b>Interspecies Antigen Sequence</b>	Mouse (84)
<b>Quality Control Testing</b>	Immunoprecipitation-Western Blot (IP-WB) Immunoprecipitation of FBXO40 transfected lysate using rabbit polyclonal anti-FBXO40 and Protein A Magnetic Bead ( <a href="#">U0007</a> ), and immunoblotted with mouse purified polyclonal anti-FBXO40.
<b>Supplied Product</b>	Antibody pair set content: 1. Antibody pair for IP: rabbit polyclonal anti-FBXO40 (300 ul) 2. Antibody pair for WB: mouse purified polyclonal anti-FBXO40 (50 ug)
<b>Storage Instruction</b>	Store reagents of the antibody pair set at -20°C or lower. Please aliquot to avoid repeated freeze thaw cycle. Reagents should be returned to -20°C storage immediately after use.

## Applications

- Immunoprecipitation-Western Blot

[Protocol Download](#)

## Gene Info — FBXO40

**Entrez GeneID** [51725](#)

**Gene Name** FBXO40

**Gene Alias** FBX40, KIAA1195, MGC129902, MGC129903

**Gene Description** F-box protein 40

**Omim ID** [609107](#)

**Gene Ontology** [Hyperlink](#)

**Gene Summary** Members of the F-box protein family, such as FBXO40, are characterized by an approximately 40 -amino acid F-box motif. SCF complexes, formed by SKP1 (MIM 601434), cullin (see CUL1; MIM 603134), and F-box proteins, act as protein-ubiquitin ligases. F-box proteins interact with SKP1 through the F box, and they interact with ubiquitination targets through other protein interaction domains (Jin et al., 2004 [PubMed 15520277]).[supplied by OMIM]

**Other Designations** muscle disease-related protein