

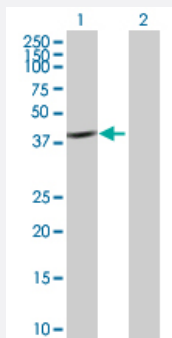
MaxPab®

CAB39 purified MaxPab mouse polyclonal antibody (B01P)

Catalog # H00051719-B01P

Size 50 ug

Applications

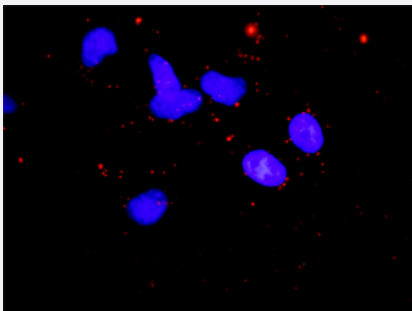


Western Blot (Transfected lysate)

Western Blot analysis of CAB39 expression in transfected 293T cell line ([H00051719-T01](#)) by CAB39 MaxPab polyclonal antibody.

Lane 1: CAB39 transfected lysate(37.51 KDa).

Lane 2: Non-transfected lysate.



In situ Proximity Ligation Assay (Cell)

Proximity Ligation Analysis of protein-protein interactions between STK11 and CAB39. HeLa cells were stained with anti-STK11 rabbit purified polyclonal 1:1200 and anti-CAB39 mouse purified polyclonal antibody 1:50. Each red dot represents the detection of protein-protein interaction complex, and nuclei were counterstained with DAPI (blue).

Specification

Product Description	Mouse polyclonal antibody raised against a full-length human CAB39 protein.
Immunogen	CAB39 (NP_057373.1, 1 a.a. ~ 341 a.a) full-length human protein.
Sequence	MPFPFGKSHKSPADIVKNLKESMAVLEKQDISDKKAEKATEEVSKNLVAMKEILYGTNEKEPQTE AVAQLAQELYNGLLSTLVADLQLIDFEGKKDVAQIFNNILRRQIGTRTPTEYICTQQNILFMLLKGY ESPEIALNCGIMLRECIRHEPLAKIILWSEQFYDFFRYVEMSTFDIASDAFATFKDLLTRHKLLSAEFL EQHYDRFFSEYEKLLHSENYVTKRQSLKLLGELLDRHNFTIMTKYISKPENLKLMMNLLRDKSRNI QFEAFHVFKVFVANPNKTQPILDILLKNQAKLIEFLSKFQNDRTEDeqFNDEKTYLVKQIRDLKRPA QQA
Host	Mouse

Reactivity	Human
Interspecies Antigen Sequence	Mouse (99)
Quality Control Testing	Antibody reactive against mammalian transfected lysate.
Storage Buffer	In 1x PBS, pH 7.4
Storage Instruction	Store at -20°C or lower. Aliquot to avoid repeated freezing and thawing.

Applications

- Western Blot (Transfected lysate)

Western Blot analysis of CAB39 expression in transfected 293T cell line ([H00051719-T01](#)) by CAB39 MaxPab polyclonal antibody.

Lane 1: CAB39 transfected lysate(37.51 KDa).

Lane 2: Non-transfected lysate.

[Protocol Download](#)

- In situ* Proximity Ligation Assay (Cell)

Proximity Ligation Analysis of protein-protein interactions between STK11 and CAB39. HeLa cells were stained with anti-STK11 rabbit purified polyclonal 1:1200 and anti-CAB39 mouse purified polyclonal antibody 1:50. Each red dot represents the detection of protein-protein interaction complex, and nuclei were counterstained with DAPI (blue).

Gene Info — CAB39

Entrez GeneID	51719
GeneBank Accession#	NM_016289
Protein Accession#	NP_057373.1
Gene Name	CAB39
Gene Alias	CGI-66, FLJ22682, MO25
Gene Description	calcium binding protein 39
Gene Ontology	Hyperlink
Other Designations	-

Pathway

- [mTOR signaling pathway](#)