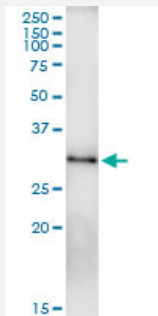


RAB23 (Human) IP-WB Antibody Pair

Catalog # H00051715-PW1

Size 1 Set

Applications



Immunoprecipitation of RAB23 transfected lysate using rabbit polyclonal anti-RAB23 and Protein A Magnetic Bead ([U0007](#)), and immunoblotted with mouse polyclonal anti-RAB23.

Specification

Product Description	This IP-WB antibody pair set comes with one antibody for immunoprecipitation and another to detect the precipitated protein in western blot.
Reactivity	Human
Interspecies Antigen Sequence	Mouse (93); Rat (93)
Quality Control Testing	Immunoprecipitation-Western Blot (IP-WB) Immunoprecipitation of RAB23 transfected lysate using rabbit polyclonal anti-RAB23 and Protein A Magnetic Bead (U0007), and immunoblotted with mouse polyclonal anti-RAB23.
Supplied Product	Antibody pair set content: 1. Antibody pair for IP: rabbit polyclonal anti-RAB23 (300 ul) 2. Antibody pair for WB: mouse polyclonal anti-RAB23 (50 ul)
Storage Instruction	Store reagents of the antibody pair set at -20°C or lower. Please aliquot to avoid repeated freeze thaw cycle. Reagents should be returned to -20°C storage immediately after use.

Applications

- Immunoprecipitation-Western Blot

[Protocol Download](#)

Gene Info — RAB23

Entrez GeneID [51715](#)

Gene Name RAB23

Gene Alias DKFZp781H0695, HSPC137, MGC8900

Gene Description RAB23, member RAS oncogene family

Omim ID [201000 606144](#)

Gene Ontology [Hyperlink](#)

Gene Summary The protein encoded by this gene belongs to the small GTPase superfamily, Rab family. It may be involved in small GTPase mediated signal transduction and intracellular protein transportation. Alternative splicing occurs at this locus and two transcript variants encoding the same protein have been identified. [provided by RefSeq]

Other Designations OTTHUMP00000016667|OTTHUMP00000040021|RAB family small GTP binding protein RAB 23|Ras-related protein Rab-23

Pathway

- [Hedgehog signaling pathway](#)