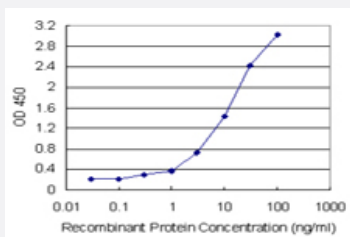


RAB23 (Human) Matched Antibody Pair

Catalog # H00051715-AP21

Size 1 Set

Applications



Sandwich ELISA detection sensitivity ranging from 0.3 ng/ml to 100 ng/ml.

Specification

Product Description	This antibody pair set comes with a matched antibody pair to detect and quantify the protein level of human RAB23.
Reactivity	Human
Interspecies Antigen Sequence	Mouse (93); Rat (93)
Quality Control Testing	Standard curve using recombinant protein (H00051715-P01) as an analyte. Sandwich ELISA detection sensitivity ranging from 0.3 ng/ml to 100 ng/ml.
Supplied Product	Antibody pair set content: 1. Capture antibody: rabbit MaxPab® affinity purified polyclonal anti-RAB23 (100 ug) 2. Detection antibody: mouse polyclonal anti-RAB23 (40 ul) *Reagents are sufficient for at least 3-5 x 96 well plates using recommended protocols.
Storage Instruction	Store reagents of the antibody pair set at -20°C or lower. Please aliquot to avoid repeated freeze thaw cycle. Reagents should be returned to -20°C storage immediately after use.

Applications

- ELISA Pair (Recombinant protein)

[Protocol Download](#)

Gene Info — RAB23

Entrez GeneID	51715
Gene Name	RAB23
Gene Alias	DKFZp781H0695, HSPC137, MGC8900
Gene Description	RAB23, member RAS oncogene family
Omim ID	201000 606144
Gene Ontology	Hyperlink
Gene Summary	The protein encoded by this gene belongs to the small GTPase superfamily, Rab family. It may be involved in small GTPase mediated signal transduction and intracellular protein transportation. Alternative splicing occurs at this locus and two transcript variants encoding the same protein have been identified. [provided by RefSeq]
Other Designations	OTTHUMP00000016667 OTTHUMP00000040021 RAB family small GTP binding protein RAB 23 Ras-related protein Rab-23

Pathway

- [Hedgehog signaling pathway](#)