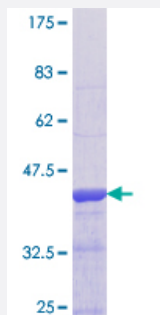


# GPRC5B (Human) Recombinant Protein (Q01)

Catalog # H00051704-Q01

Size 25 ug, 10 ug

## Applications



## Specification

|                                |  |
|--------------------------------|--|
| <b>Product Description</b>     | Human GPRC5B partial ORF ( NP_057319.1, 302 a.a. - 403 a.a.) recombinant protein with GST-tag at N-terminal. |
| <b>Sequence</b>                | ENTPNYFDTSQPRMRETAFEEDVQLPRAYMENKAFSMDEHNAALRTAGFPNGSLGKRPSGSLG<br>KRPSAPFRSNVYQPTEMAVVLNGGTIPTAPPSHTGRHLW   |
| <b>Host</b>                    | Wheat Germ (in vitro)  |
| <b>Theoretical MW (kDa)</b>    | 36.96  |
| <b>Preparation Method</b>      | <a href="#">in vitro wheat germ expression system</a>  |
| <b>Purification</b>            | Glutathione Sepharose 4 Fast Flow  |
| <b>Quality Control Testing</b> | 12.5% SDS-PAGE Stained with Coomassie Blue.  |
| <b>Storage Buffer</b>          | 50 mM Tris-HCl, 10 mM reduced Glutathione, pH=8.0 in the elution buffer.                                     |
| <b>Storage Instruction</b>     | Store at -80°C. Aliquot to avoid repeated freezing and thawing.  |
| <b>Note</b>                    | Best use within three months from the date of receipt of this protein.                                       |

## Applications

- Enzyme-linked Immunoabsorbent Assay
- Western Blot (Recombinant protein)
- Antibody Production
- Protein Array

## Gene Info — GPRC5B

**Entrez GeneID** [51704](#)

**GeneBank Accession#** [NM\\_016235](#)

**Protein Accession#** [NP\\_057319.1](#)

**Gene Name** GPRC5B

**Gene Alias** RAIG-2, RAIG2

**Gene Description** G protein-coupled receptor, family C, group 5, member B

**Omim ID** [605948](#)

**Gene Ontology** [Hyperlink](#)

**Gene Summary** The protein encoded by this gene is a member of the type 3 G protein-coupled receptor family. Members of this superfamily are characterized by a signature 7-transmembrane domain motif. The specific function of this protein is unknown; however, this protein may mediate the cellular effects of retinoic acid on the G protein signal transduction cascade. [provided by RefSeq]

**Other Designations** G protein-coupled receptor, family C, group 1, member B|retinoic acid responsive gene protein

## Disease

- [Genetic Predisposition to Disease](#)
- [Hyperparathyroidism](#)
- [Obesity](#)