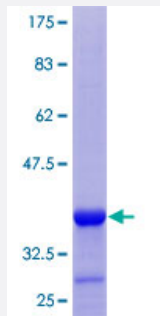


FKBP7 (Human) Recombinant Protein (Q01)

Catalog # H00051661-Q01

Size 25 ug, 10 ug

Applications



Specification

Product Description	Human FKBP7 partial ORF (NP_851939.1, 138 a.a. - 222 a.a.) recombinant protein with GST-tag at N-terminal.
Sequence	EIELYAVTKGPRSIETFKQIDMDNDRQLSKAEINLYLQREFEKDEKPRDKSYQDAVLEDIFKKNDHDGDGFISPKEYNVYQHDEL
Host	Wheat Germ (in vitro)
Theoretical MW (kDa)	35.09
Interspecies Antigen Sequence	Mouse (87); Rat (87)
Preparation Method	in vitro wheat germ expression system
Purification	Glutathione Sepharose 4 Fast Flow
Quality Control Testing	12.5% SDS-PAGE Stained with Coomassie Blue.
Storage Buffer	50 mM Tris-HCl, 10 mM reduced Glutathione, pH=8.0 in the elution buffer.
Storage Instruction	Store at -80°C. Aliquot to avoid repeated freezing and thawing.
Note	Best use within three months from the date of receipt of this protein.

Applications

- Enzyme-linked Immunoabsorbent Assay
- Western Blot (Recombinant protein)
- Antibody Production
- Protein Array

Gene Info — FKBP7

Entrez GeneID [51661](#)

GeneBank Accession# [NM_181342](#)

Protein Accession# [NP_851939.1](#)

Gene Name FKBP7

Gene Alias FKBP23, MGC9420, PPlase

Gene Description FK506 binding protein 7

Omim ID [607062](#)

Gene Ontology [Hyperlink](#)

Gene Summary The protein encoded by this gene belongs to the FKBP-type peptidyl-prolyl cis/trans isomerase (PPlase) family. Members of this family exhibit PPlase activity and function as molecular chaperon es. A similar protein in mouse is located in the endoplasmic reticulum and binds calcium. [provided by RefSeq]

Other Designations FK506-binding protein 23|FK506-binding protein 7|peptidyl-prolyl cis-trans isomerase|rotamase