

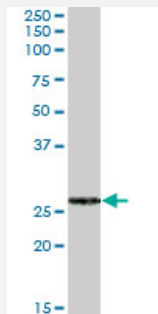
MaxPab®

## FKBP7 purified MaxPab mouse polyclonal antibody (B02P)

Catalog # H00051661-B02P

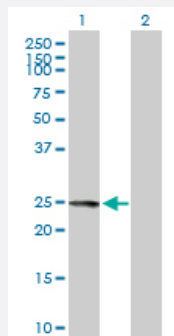
Size 50 ug

### Applications



#### Western Blot (Tissue lysate)

FKBP7 MaxPab polyclonal antibody. Western Blot analysis of FKBP7 expression in human liver.



#### Western Blot (Transfected lysate)

Western Blot analysis of FKBP7 expression in transfected 293T cell line ([H00051661-T01](#)) by FKBP7 MaxPab polyclonal antibody.

Lane 1: FKBP7 transfected lysate(24.42 KDa).

Lane 2: Non-transfected lysate.

### Specification

Product Description	Mouse polyclonal antibody raised against a full-length human FKBP7 protein.
Immunogen	FKBP7 (NP_851939.1, 1 a.a. ~ 222 a.a) full-length human protein.
Sequence	MPKTMHFLFRFMFFYLWGLFTAQRQKKEESTEEVKIEVLHRPENCSKTSKKGDLLNAHYDGYLAK DGSKFYCSRTQNEGHPKWFLVGVGVKGLDIAMTDMCPGEKRVVIPPSPFAYGKEGYAEGKIPP DATLIFEIELYAVTKGPRSIETFKQIDMDNDRQLSKAEINLYLQREFEKDEKPRDKSYQDAVLEDIFK KNDHDGDFISPKEYNVYQHDEL
Host	Mouse
Reactivity	Human

Interspecies Antigen Sequence	Mouse (87); Rat (87)
Quality Control Testing	Antibody reactive against mammalian transfected lysate.
Storage Buffer	In 1x PBS, pH 7.4
Storage Instruction	Store at -20°C or lower. Aliquot to avoid repeated freezing and thawing.

## Applications

- Western Blot (Tissue lysate)

FKBP7 MaxPab polyclonal antibody. Western Blot analysis of FKBP7 expression in human liver.

[Protocol Download](#)

- Western Blot (Transfected lysate)

Western Blot analysis of FKBP7 expression in transfected 293T cell line ([H00051661-T01](#)) by FKBP7 MaxPab polyclonal antibody.

Lane 1: FKBP7 transfected lysate(24.42 KDa).

Lane 2: Non-transfected lysate.

[Protocol Download](#)

## Gene Info — FKBP7

Entrez GeneID	<a href="#">51661</a>
GeneBank Accession#	<a href="#">NM_181342.1</a>
Protein Accession#	<a href="#">NP_851939.1</a>
Gene Name	FKBP7
Gene Alias	FKBP23, MGC9420, PPlase
Gene Description	FK506 binding protein 7
Omim ID	<a href="#">607062</a>
Gene Ontology	<a href="#">Hyperlink</a>

**Gene Summary**

The protein encoded by this gene belongs to the FKBP-type peptidyl-prolyl cis/trans isomerase (PPlase) family. Members of this family exhibit PPlase activity and function as molecular chaperones. A similar protein in mouse is located in the endoplasmic reticulum and binds calcium. [provided by RefSeq]

**Other Designations**

FK506-binding protein 23|FK506-binding protein 7|peptidyl-prolyl cis-trans isomerase|rotamase