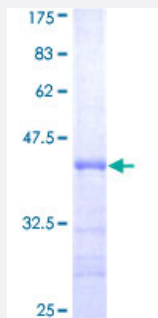


GINS2 (Human) Recombinant Protein (Q01)

Catalog # H00051659-Q01

Size 25 ug, 10 ug

Applications



Specification

Product Description	Human GINS2 partial ORF (AAH03186, 1 a.a. - 100 a.a.) recombinant protein with GST-tag at N-terminal.
Sequence	MDAAEVEFLAEKELVTIIPNFSLDKYLIGGDLGPFNPGLPVEVPLWLAINLKQRQKCRLLPPEWMD VEKLEKMRDHERKEETFTPMPSPYME LTKLLL
Host	Wheat Germ (in vitro)
Theoretical MW (kDa)	36.63
Interspecies Antigen Sequence	Mouse (92); Rat (92)
Preparation Method	in vitro wheat germ expression system
Purification	Glutathione Sepharose 4 Fast Flow
Quality Control Testing	12.5% SDS-PAGE Stained with Coomassie Blue.
Storage Buffer	50 mM Tris-HCl, 10 mM reduced Glutathione, pH=8.0 in the elution buffer.
Storage Instruction	Store at -80°C. Aliquot to avoid repeated freezing and thawing.
Note	Best use within three months from the date of receipt of this protein.

Applications

- Enzyme-linked Immunoabsorbent Assay
- Western Blot (Recombinant protein)
- Antibody Production
- Protein Array

Gene Info — GINS2

Entrez GeneID [51659](#)

GeneBank Accession# [BC003186](#)

Protein Accession# [AAH03186](#)

Gene Name GINS2

Gene Alias HSPC037, PSF2, Pfs2

Gene Description GINS complex subunit 2 (Psf2 homolog)

Omim ID [610609](#)

Gene Ontology [Hyperlink](#)

Gene Summary The yeast heterotetrameric GINS complex is made up of Sld5 (GINS4; MIM 610611), Psf1 (GINS 1; MIM 610608), Psf2, and Psf3 (GINS3; MIM 610610). The formation of this complex is essential for the initiation of DNA replication in yeast and Xenopus egg extracts (Ueno et al., 2005 [PubMed 16287864]). See GINS1 for additional information about the GINS complex.[supplied by OMIM]

Other Designations DNA replication complex GINS protein PSF2