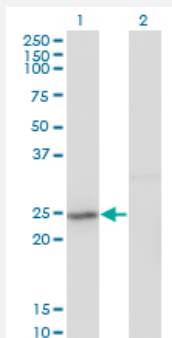


GINS2 monoclonal antibody (M02), clone 3H4

Catalog # H00051659-M02

Size 100 ug

Applications

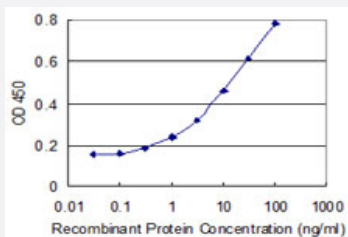


Western Blot (Transfected lysate)

Western Blot analysis of GINS2 expression in transfected 293T cell line by GINS2 monoclonal antibody (M02), clone 3H4.

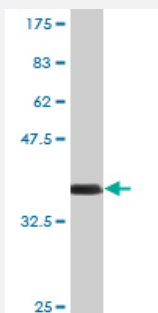
Lane 1: GINS2 transfected lysate (Predicted MW: 21.4 KDa).

Lane 2: Non-transfected lysate.



Sandwich ELISA (Recombinant protein)

Detection limit for recombinant GST tagged GINS2 is 0.1 ng/ml as a capture antibody.



Western Blot detection against Immunogen (36.63 KDa) .

Specification

Product Description

Mouse monoclonal antibody raised against a partial recombinant GINS2.

Immunogen	GINS2 (AAH03186, 1 a.a. ~ 100 a.a) partial recombinant protein with GST tag. MW of the GST tag alone is 26 KDa.
Sequence	MDAAEVEFLAEKELVTIIPNFSLDKYLIGGDLGPFNPGLPVEVPLWLAINLKQRQKCRLLPPEWMD VEKLEKMRDHERKEETFTPMPSPYEMELTKLLL
Host	Mouse
Reactivity	Human
Interspecies Antigen Sequence	Mouse (92); Rat (92)
Isotype	IgG2b Kappa
Quality Control Testing	Antibody Reactive Against Recombinant Protein. Western Blot detection against Immunogen (36.63 KDa) .
Storage Buffer	In 1x PBS, pH 7.4
Storage Instruction	Store at -20°C or lower. Aliquot to avoid repeated freezing and thawing.

Applications

- Western Blot (Transfected lysate)

Western Blot analysis of GINS2 expression in transfected 293T cell line by GINS2 monoclonal antibody (M02), clone 3H4.

Lane 1: GINS2 transfected lysate (Predicted MW: 21.4 KDa).

Lane 2: Non-transfected lysate.

[Protocol Download](#)

- Western Blot (Recombinant protein)

[Protocol Download](#)

- Sandwich ELISA (Recombinant protein)

Detection limit for recombinant GST tagged GINS2 is 0.1 ng/ml as a capture antibody.

[Protocol Download](#)

- ELISA

Gene Info — GINS2

Entrez GeneID	51659
GeneBank Accession#	BC003186
Protein Accession#	AAH03186
Gene Name	GINS2
Gene Alias	HSPC037, PSF2, Pfs2
Gene Description	GINS complex subunit 2 (Psf2 homolog)
Omim ID	610609
Gene Ontology	Hyperlink
Gene Summary	The yeast heterotetrameric GINS complex is made up of Sld5 (GIN54; MIM 610611), Psf1 (GIN51; MIM 610608), Psf2, and Psf3 (GIN53; MIM 610610). The formation of this complex is essential for the initiation of DNA replication in yeast and Xenopus egg extracts (Ueno et al., 2005 [PubMed 16287864]). See GINS1 for additional information about the GINS complex.[supplied by OMIM]
Other Designations	DNA replication complex GINS protein PSF2