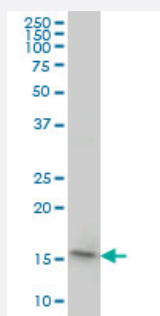


PPIL1 monoclonal antibody (M01), clone 2C2

Catalog # H00051645-M01

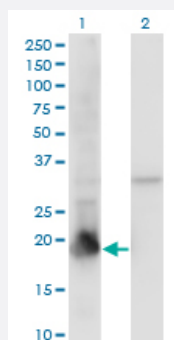
Size 100 ug

Applications



Western Blot (Cell lysate)

PPIL1 monoclonal antibody (M01), clone 2C2 Western Blot analysis of PPIL1 expression in HeLa (Cat # L013V1).

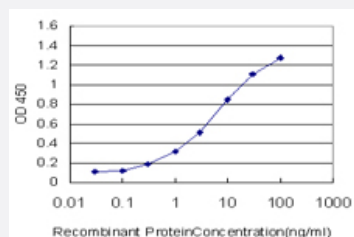


Western Blot (Transfected lysate)

Western Blot analysis of PPIL1 expression in transfected 293T cell line by PPIL1 monoclonal antibody (M01), clone 2C2.

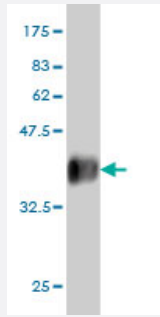
Lane 1: PPIL1 transfected lysate(18.2 KDa).

Lane 2: Non-transfected lysate.



Sandwich ELISA (Recombinant protein)

Detection limit for recombinant GST tagged PPIL1 is approximately 0.1ng/ml as a capture antibody.



Western Blot detection against Immunogen (35.75 KDa) .

Specification

| | |
|--------------------------------------|---|
| Product Description | Mouse monoclonal antibody raised against a partial recombinant PPIL1. |
| Immunogen | PPIL1 (NP_057143, 76 a.a. ~ 166 a.a) partial recombinant protein with GST tag. MW of the GST tag alone is 26 KDa. |
| Sequence | SIYGKQFEDELHPDLKFTGAGILAMANAGPDTNGSQFFVTLAPTQWLDGKHTIFGRVCQGIGMVN RVGMVETNSQDRPVDDVKIKAYPSG |
| Host | Mouse |
| Reactivity | Human |
| Interspecies Antigen Sequence | Mouse (98); Rat (98) |
| Isotype | IgG2a Kappa |
| Quality Control Testing | Antibody Reactive Against Recombinant Protein. Western Blot detection against Immunogen (35.75 KDa) . |
| Storage Buffer | In 1x PBS, pH 7.4 |
| Storage Instruction | Store at -20°C or lower. Aliquot to avoid repeated freezing and thawing. |

Applications

- Western Blot (Cell lysate)

PPIL1 monoclonal antibody (M01), clone 2C2 Western Blot analysis of PPIL1 expression in HeLa (Cat # L013V1).

[Protocol Download](#)

- Western Blot (Transfected lysate)

Western Blot analysis of PPIL1 expression in transfected 293T cell line by PPIL1 monoclonal antibody (M01), clone 2C2.

Lane 1: PPIL1 transfected lysate(18.2 KDa).

Lane 2: Non-transfected lysate.

[Protocol Download](#)

- Western Blot (Recombinant protein)

[Protocol Download](#)

- Sandwich ELISA (Recombinant protein)

Detection limit for recombinant GST tagged PPIL1 is approximately 0.1ng/ml as a capture antibody.

[Protocol Download](#)

- ELISA

Gene Info — PPIL1

Entrez GeneID [51645](#)

GeneBank Accession# [NM_016059](#)

Protein Accession# [NP_057143](#)

Gene Name PPIL1

Gene Alias CGI-124, CYPL1, MGC678, PPlase, hCyPX

Gene Description peptidylprolyl isomerase (cyclophilin)-like 1

Omim ID [601301](#)

Gene Ontology [Hyperlink](#)

Gene Summary This gene is a member of the cyclophilin family of peptidylprolyl isomerases (PPlases). The cyclophilins are a highly conserved, ubiquitous family, members of which play an important role in protein folding, immunosuppression by cyclosporin A, and infection of HIV-1 virions. Based on similarity to other PPlases, this protein could accelerate the folding of proteins and might catalyze the cis-trans isomerization of proline imidic peptide bonds in oligopeptides. [provided by RefSeq]

Other Designations OTTHUMP00000016310|cyclophilin-related gene 1|peptidyl-prolyl cis-trans isomerase|peptidylprolyl isomerase-like 1|rotamase