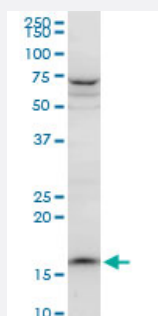


# PPIL1 polyclonal antibody (A01)

Catalog # H00051645-A01

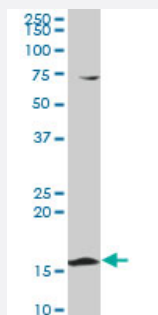
Size 50 uL

## Applications



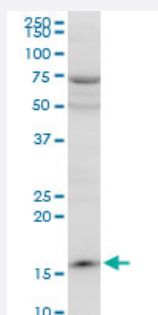
### Western Blot (Cell lysate)

PPIL1 polyclonal antibody (A01), Lot # 060524JCS1. Western Blot analysis of PPIL1 expression in NIH/3T3.



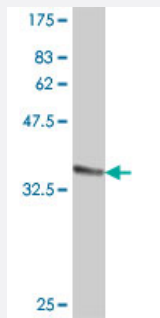
### Western Blot (Cell lysate)

PPIL1 polyclonal antibody (A01), Lot # 060524JCS1 Western Blot analysis of PPIL1 expression in K-562 ( Cat # L009V1 ).



### Western Blot (Cell lysate)

PPIL1 polyclonal antibody (A01), Lot # 060524JCS1. Western Blot analysis of PPIL1 expression in PC-12.



Western Blot detection against Immunogen (36.12 KDa) .

## Specification

<b>Product Description</b>	Mouse polyclonal antibody raised against a partial recombinant PPIL1.
<b>Immunogen</b>	PPIL1 (NP_057143, 76 a.a. ~ 166 a.a) partial recombinant protein with GST tag.
<b>Sequence</b>	SIYGKQFEDELHPDLKFTGAGILAMANAGPDTNGSQFFVTLAPTQWLDGKHTIFGRVCQGIGMVN RVGMVETNSQDRPVDDVKIIKAYPSG
<b>Host</b>	Mouse
<b>Reactivity</b>	Human, Mouse, Rat
<b>Interspecies Antigen Sequence</b>	Mouse (98); Rat (98)
<b>Quality Control Testing</b>	Antibody Reactive Against Recombinant Protein. Western Blot detection against Immunogen (36.12 KDa) .
<b>Storage Buffer</b>	50 % glycerol
<b>Storage Instruction</b>	Store at -20°C or lower. Aliquot to avoid repeated freezing and thawing.

## Applications

- Western Blot (Cell lysate)

PPIL1 polyclonal antibody (A01), Lot # 060524JCS1. Western Blot analysis of PPIL1 expression in NIH/3T3.

[Protocol Download](#)

- Western Blot (Cell lysate)

PPIL1 polyclonal antibody (A01), Lot # 060524JCS1 Western Blot analysis of PPIL1 expression in K-562 ( Cat # L009V1 ).

[Protocol Download](#)

- Western Blot (Cell lysate)

PPIL1 polyclonal antibody (A01), Lot # 060524JCS1. Western Blot analysis of PPIL1 expression in PC-12.

[Protocol Download](#)

- Western Blot (Recombinant protein)

[Protocol Download](#)

- ELISA

## Gene Info — PPIL1

Entrez GeneID [51645](#)

GeneBank Accession# [NM\\_016059](#)

Protein Accession# [NP\\_057143](#)

Gene Name PPIL1

Gene Alias CGI-124, CYPL1, MGC678, PPlase, hCyPX

Gene Description peptidylprolyl isomerase (cyclophilin)-like 1

Omim ID [601301](#)

Gene Ontology [Hyperlink](#)

**Gene Summary** This gene is a member of the cyclophilin family of peptidylprolyl isomerases (PPlases). The cyclophilins are a highly conserved, ubiquitous family, members of which play an important role in protein folding, immunosuppression by cyclosporin A, and infection of HIV-1 virions. Based on similarity to other PPlases, this protein could accelerate the folding of proteins and might catalyze the cis-trans isomerization of proline imidic peptide bonds in oligopeptides. [provided by RefSeq]

**Other Designations** OTTHUMP00000016310|cyclophilin-related gene 1|peptidyl-prolyl cis-trans isomerase|peptidylprolyl isomerase-like 1|rotamase