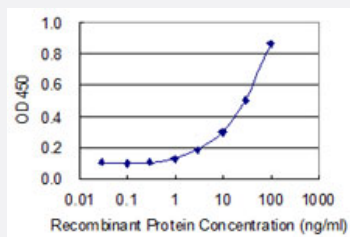


MRPL48 monoclonal antibody (M02), clone 1H8

Catalog # H00051642-M02

Size 100 ug

Applications



Sandwich ELISA (Recombinant protein)

Detection limit for recombinant GST tagged MRPL48 is 0.3 ng/ml as a capture antibody.

Specification

Product Description	Mouse monoclonal antibody raised against a full-length recombinant MRPL48.
Immunogen	MRPL48 (AAH09764, 1 a.a. ~ 212 a.a) full-length recombinant protein with GST tag. MW of the GST tag alone is 26 KDa.
Sequence	MSGTLGKVLCLRNNTIFKQAFSLLRFRTSGEKPISVGGILLSISRPYKTKPTHGIGKYKHLIAEEPK KKKGKVEVRAINLGTDYEGVLNIHLTAYDMTLAESYAQYVHNLCNSLSIKVEESYAMPTKTIEVLQL QDQGSKMLLDSVLTHERVVQISGLSATFAEIFLEIQSSLPEGVRLSVKEHTEEDFKGRFKARPEL EELLAKLK
Host	Mouse
Reactivity	Human
Interspecies Antigen Sequence	Mouse (81); Rat (82)
Isotype	IgG2a Kappa
Quality Control Testing	Antibody Reactive Against Recombinant Protein.
Storage Buffer	In 1x PBS, pH 7.4

Storage Instruction

Store at -20°C or lower. Aliquot to avoid repeated freezing and thawing.

Applications

- Sandwich ELISA (Recombinant protein)

Detection limit for recombinant GST tagged MRPL48 is 0.3 ng/ml as a capture antibody.

[Protocol Download](#)

- ELISA

Gene Info — MRPL48

Entrez GeneID [51642](#)

GeneBank Accession# [BC009764](#)

Protein Accession# [AAH09764](#)

Gene Name MRPL48

Gene Alias CGI-118, FLJ17047, FLJ99260, HSPC290, L48MT, MGC13323, MRP-L48

Gene Description mitochondrial ribosomal protein L48

Gene Ontology [Hyperlink](#)

Gene Summary Mammalian mitochondrial ribosomal proteins are encoded by nuclear genes and help in protein synthesis within the mitochondrion. Mitochondrial ribosomes (mitoribosomes) consist of a small 28 S subunit and a large 39S subunit. They have an estimated 75% protein to rRNA composition compared to prokaryotic ribosomes, where this ratio is reversed. Another difference between mammalian mitoribosomes and prokaryotic ribosomes is that the latter contain a 5S rRNA. Among different species, the proteins comprising the mitoribosome differ greatly in sequence, and sometimes in biochemical properties, which prevents easy recognition by sequence homology. This gene encodes a 39S subunit protein. A pseudogene corresponding to this gene is found on chromosome 6p. [provided by RefSeq]

Other Designations 39S ribosomal protein L48, mitochondrial